

Pacific Anomalies Workshop 2015



# Temperature Anomalies in the Waters near Two San Diego Ocean Outfalls

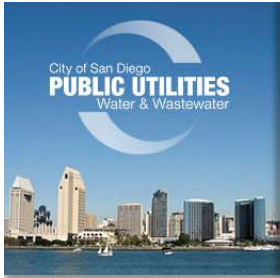
*CTD and Mooring Results*

Wendy Enright, Adriano Feit, Greg Welch, Ami Latker, Tim Stebbins  
(City of San Diego)

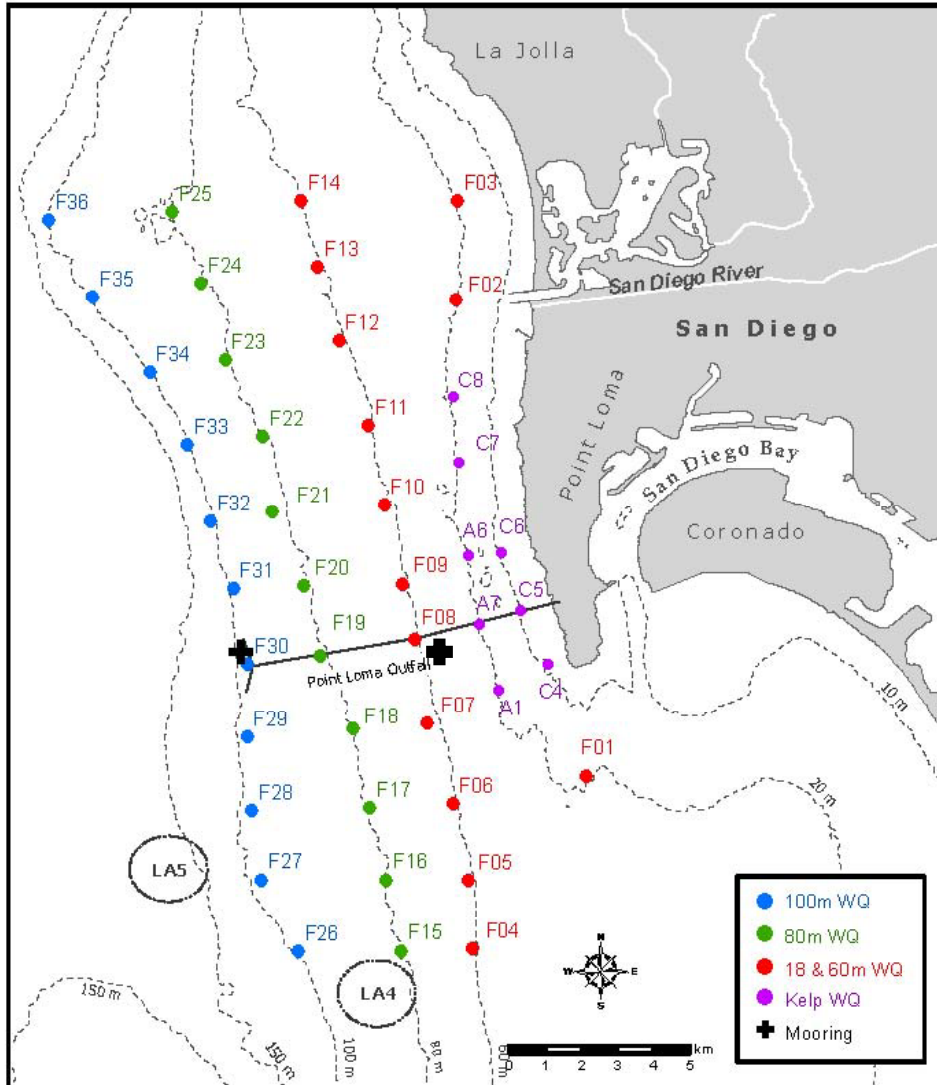
Ed Parnell  
(Scripps Institution of Oceanography)

May 5-6, 2015

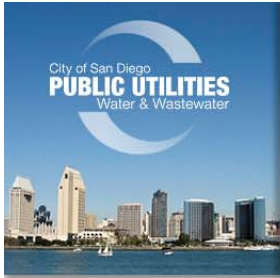




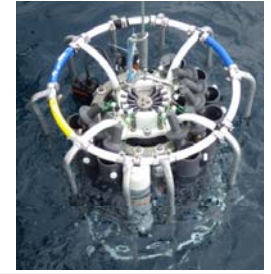
# Study Area – Point Loma



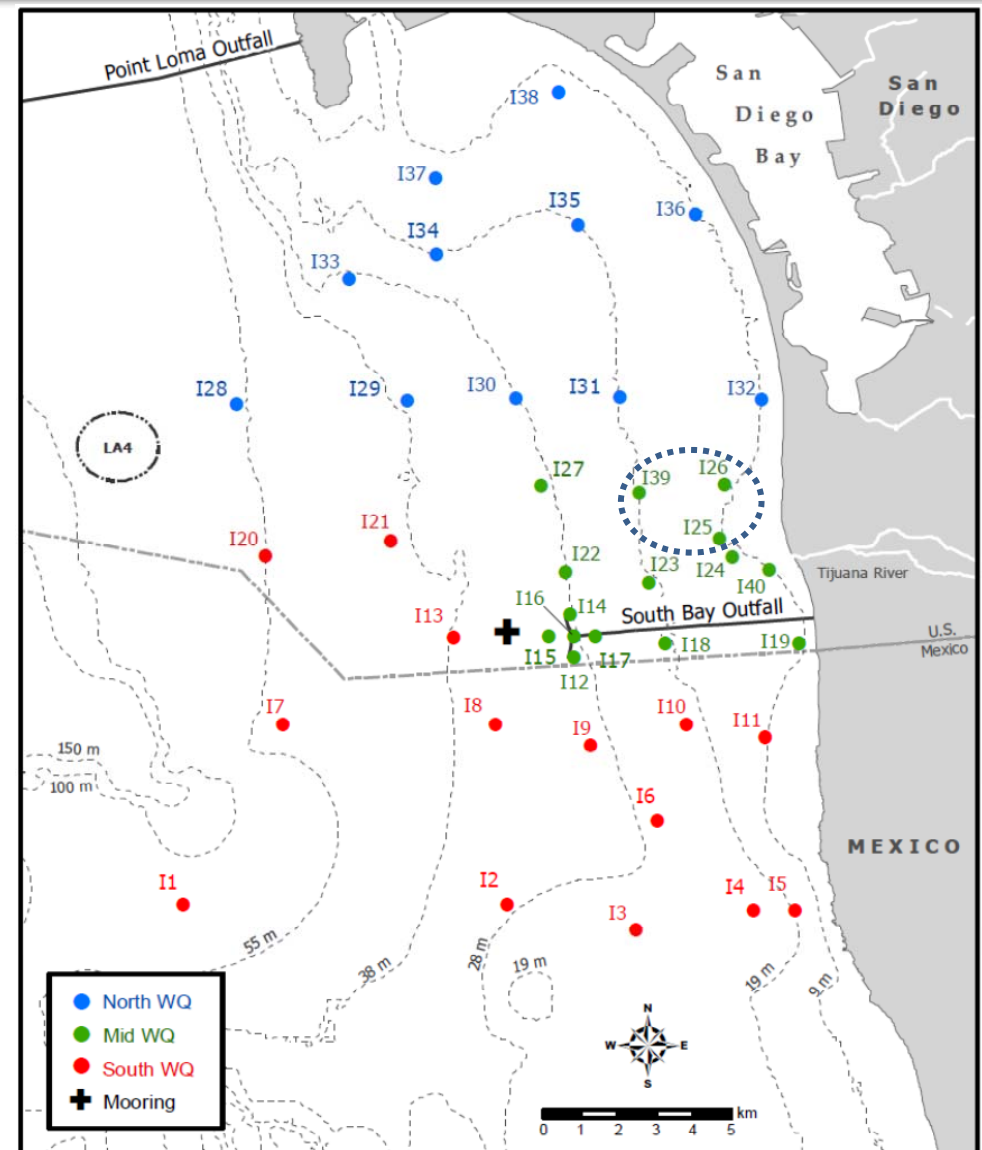
- Kelp bed stations sampled weekly since 1991 (9 and 18-m stations)
- Offshore Point Loma stations sampled monthly 1991-2003, quarterly August 2003-present (18, 60, 80, 98-m contours)
- Moorings since mid-2006 (60 and 100 m)

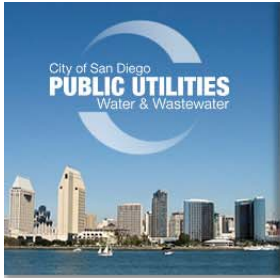


# Study Area – South Bay

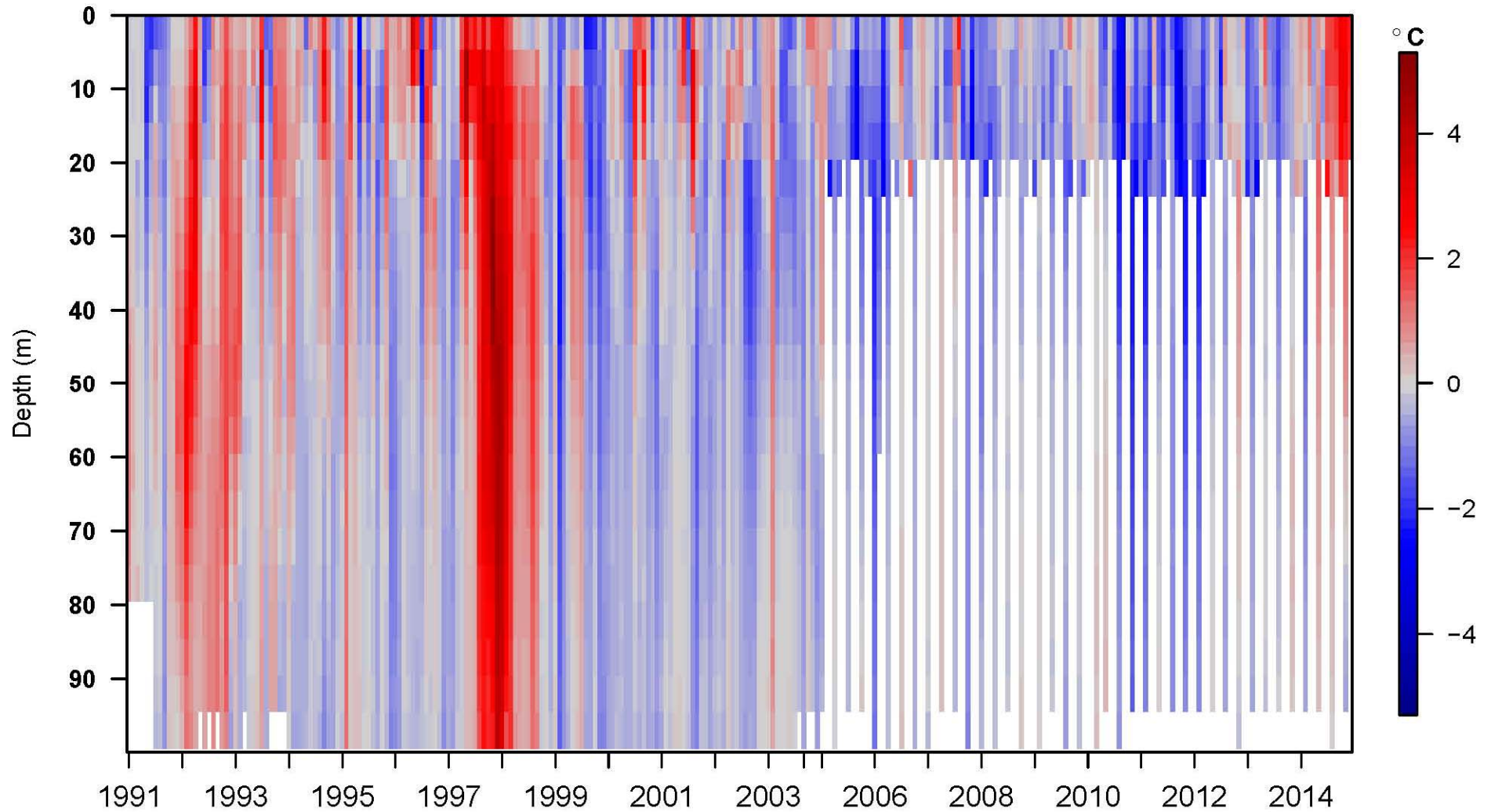


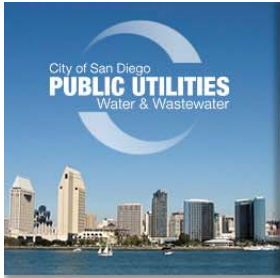
- Three “kelp bed” stations sampled weekly since 1995 (9 and 18-m stations)
- Other stations sampled monthly 1995-2013, quarterly 2014-present (9, 19, 28, 38, 55-m contours)
- Moorings since 2014



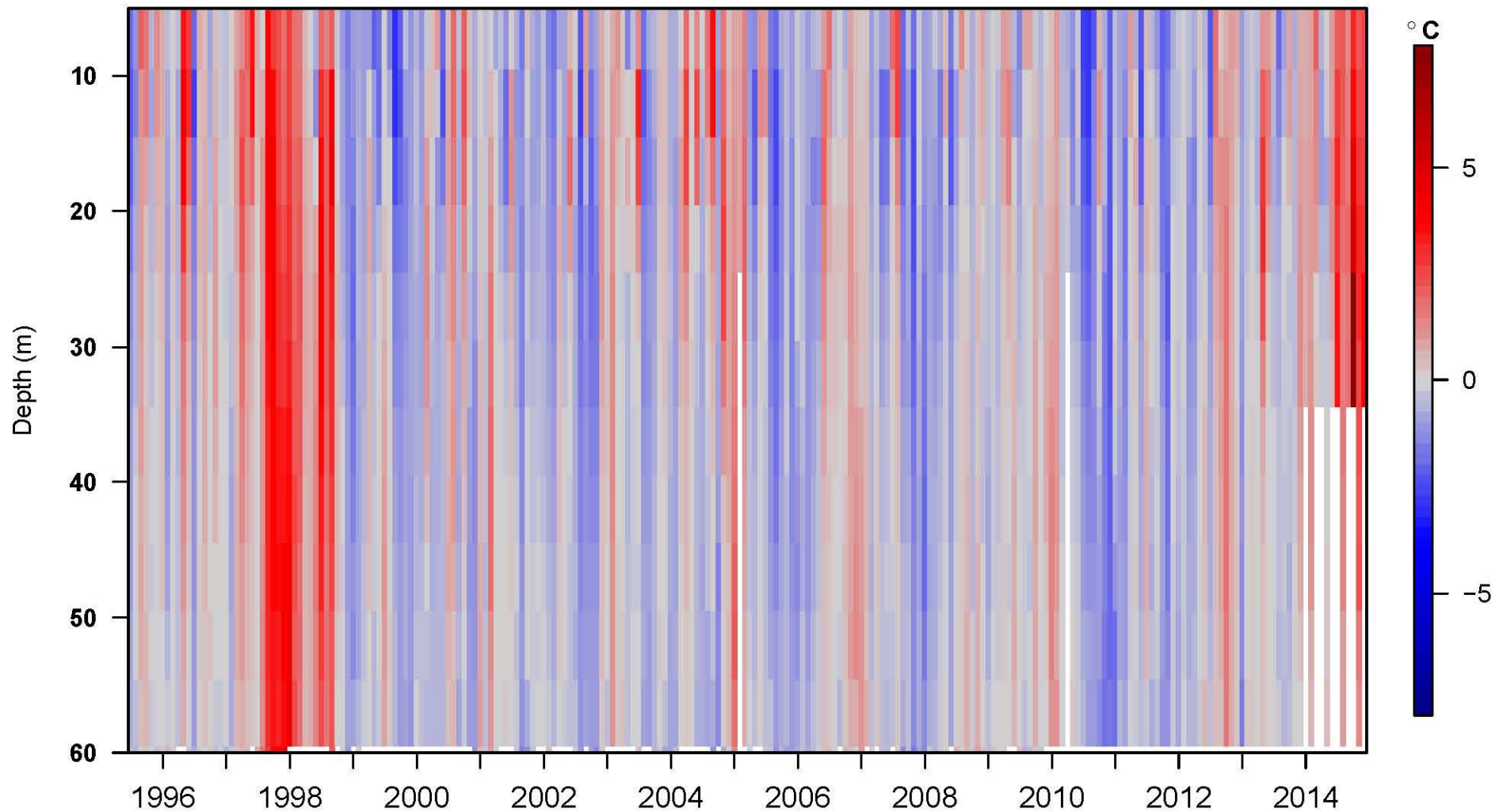


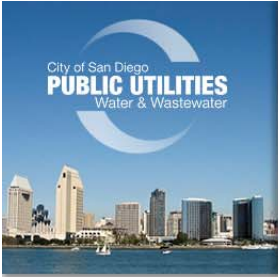
# Temperature Anomalies: Point Loma CTD Data



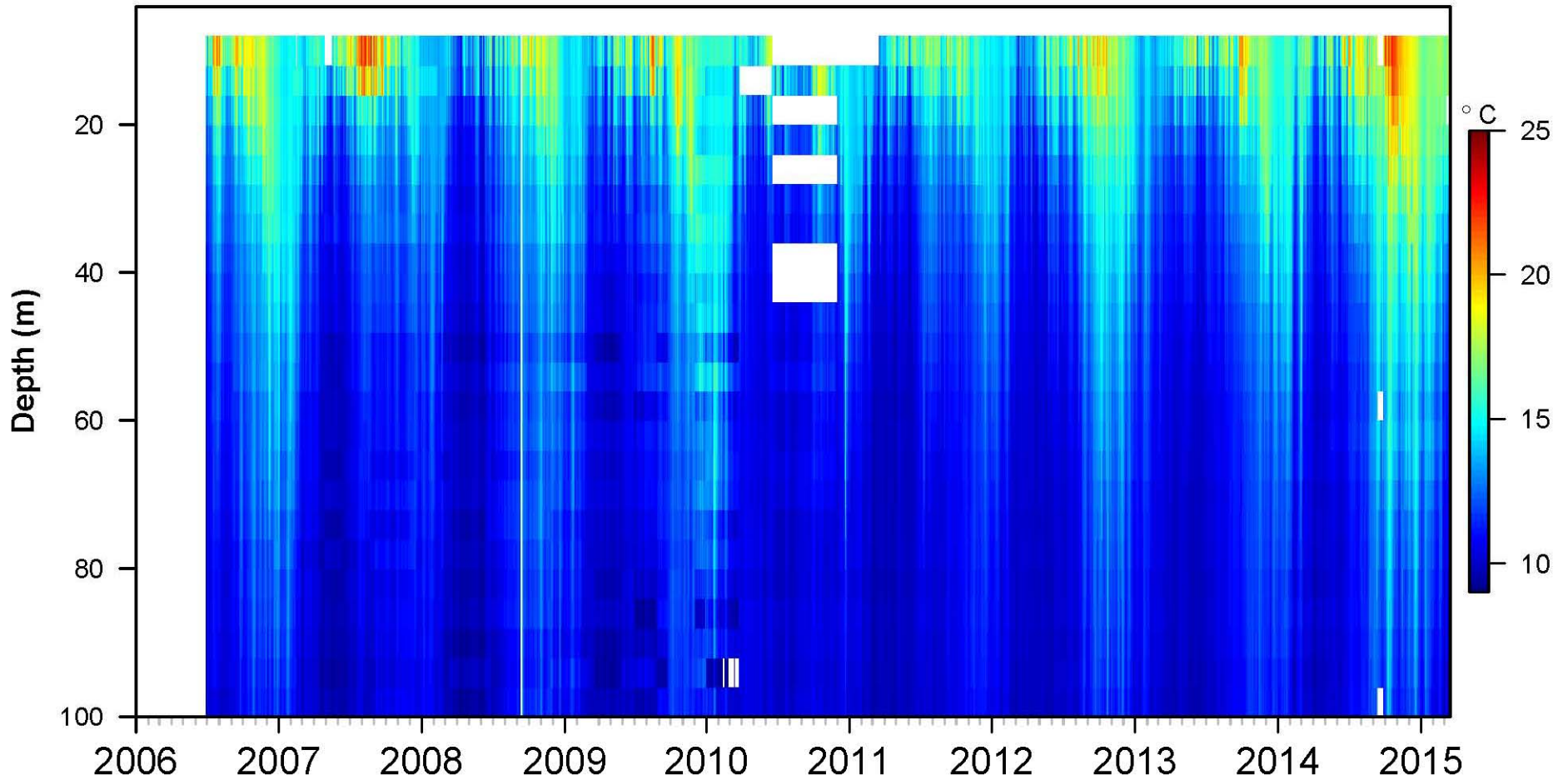


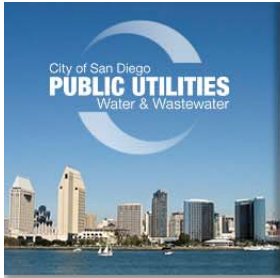
# Temperature Anomalies: South Bay CTD Data



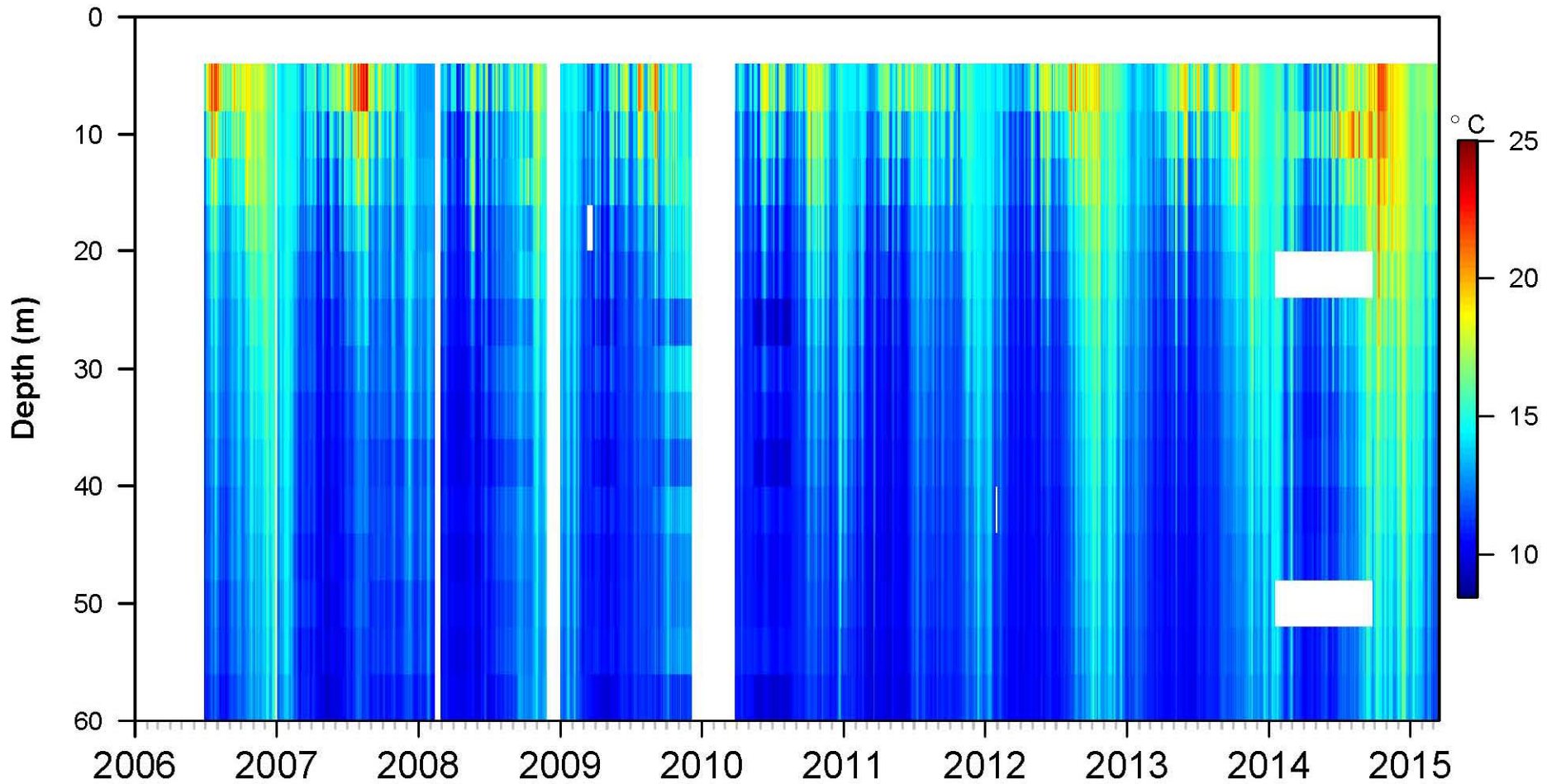


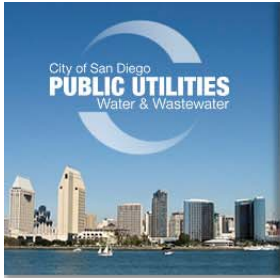
# Point Loma Moorings – 100 m



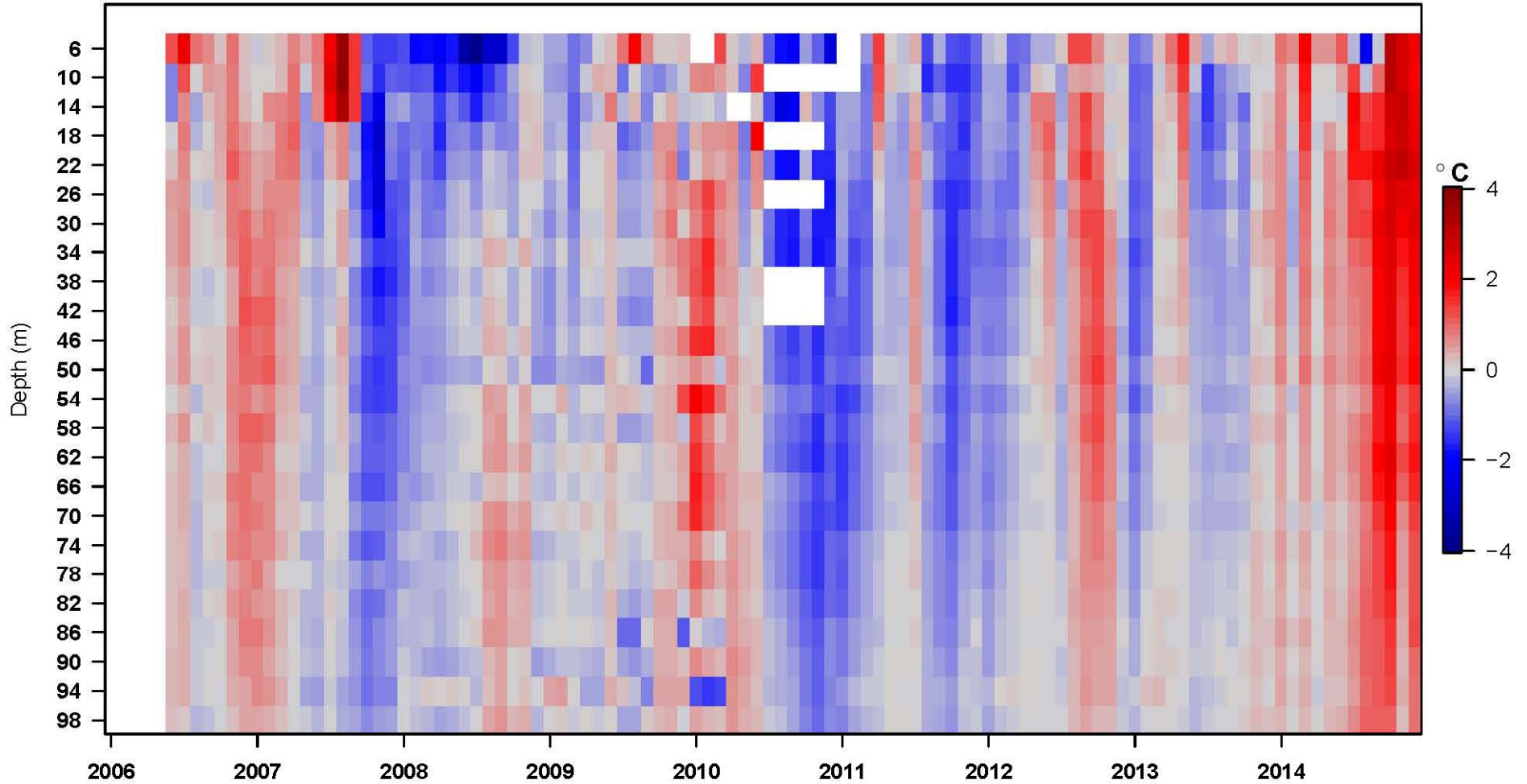


# Point Loma Moorings – 60 m

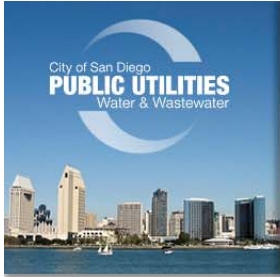




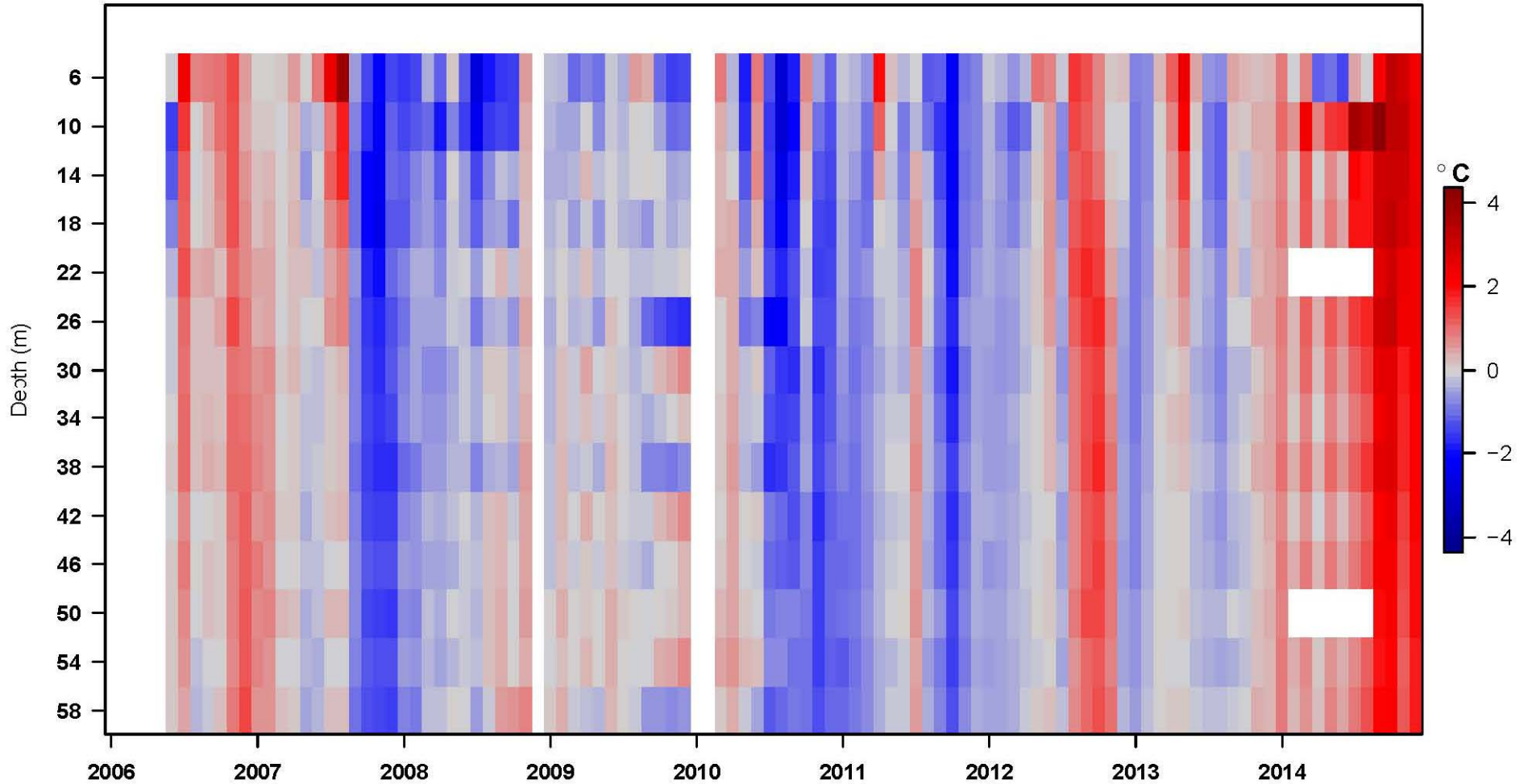
# Point Loma 100-m Mooring Anomalies

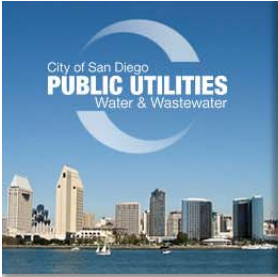




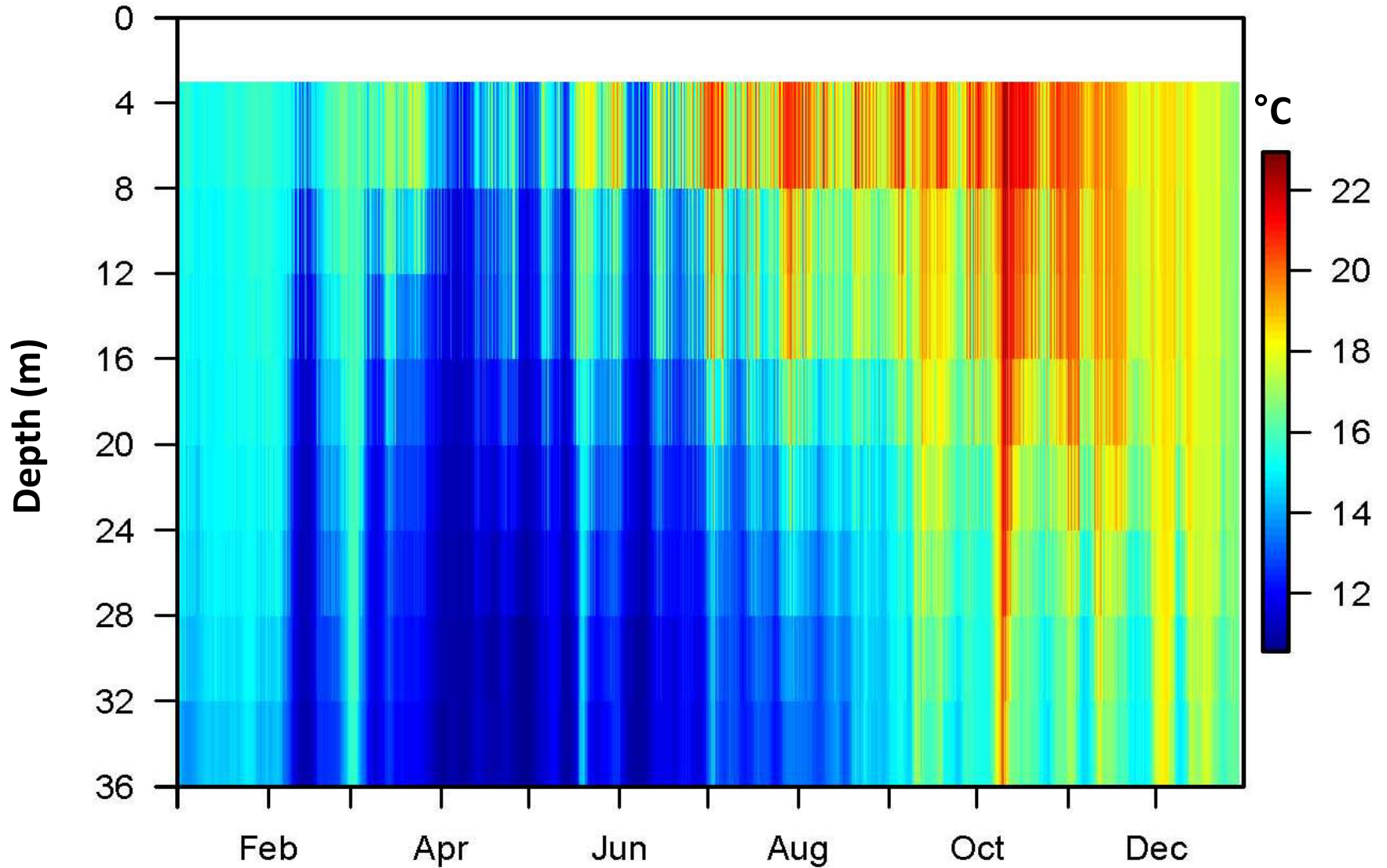


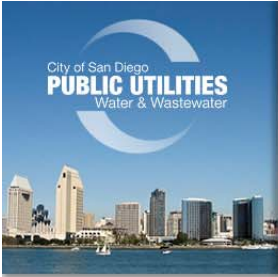
# Point Loma 60-m Mooring Anomalies





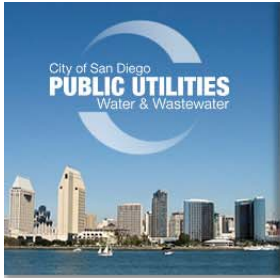
# South Bay 36-m Mooring 2014 only





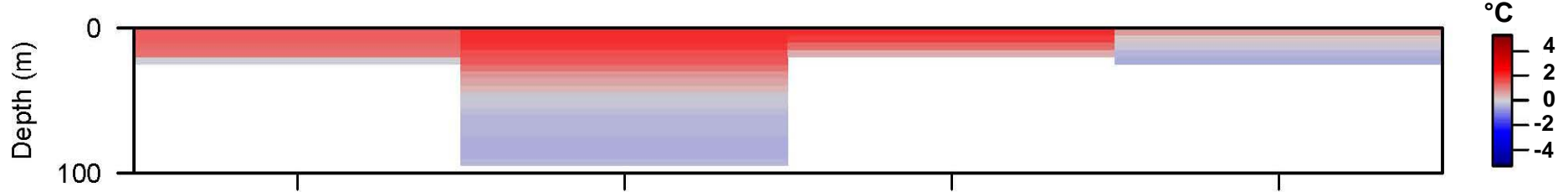
# *Faunal Response? January 2015*



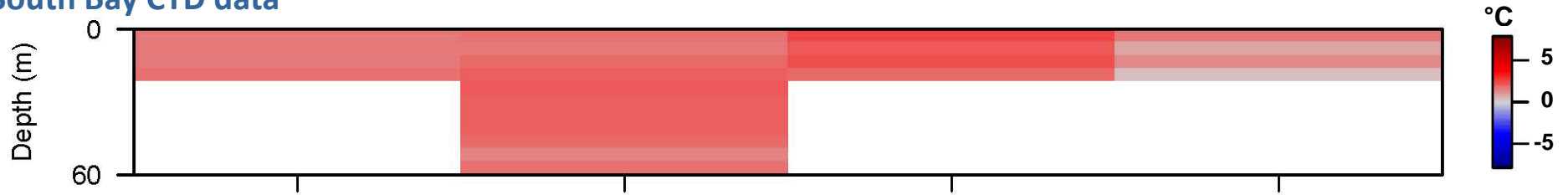


# 2015 So Far...

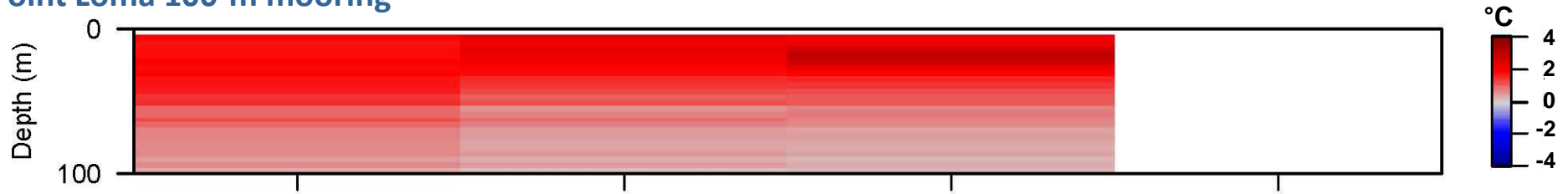
Point Loma CTD data



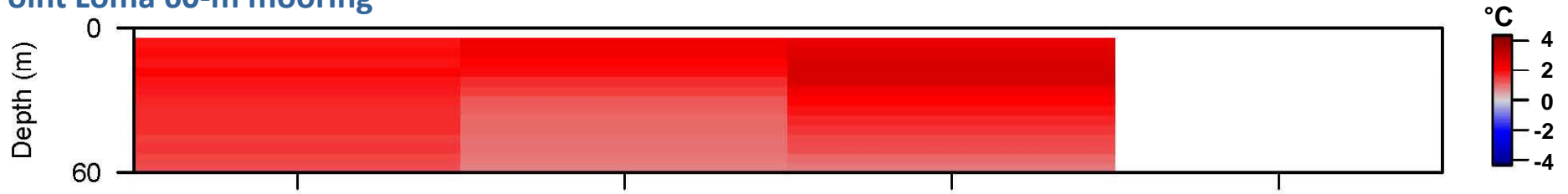
South Bay CTD data



Point Loma 100-m mooring



Point Loma 60-m mooring

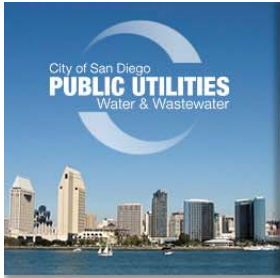


January

February

March

April



# Questions & Contacts

*City of San Diego  
Marine Biology Laboratory*

Wendy Enright  
[wenright@sandiego.gov](mailto:wenright@sandiego.gov)

