

# NOAA West Watch Update *20 January 2026*

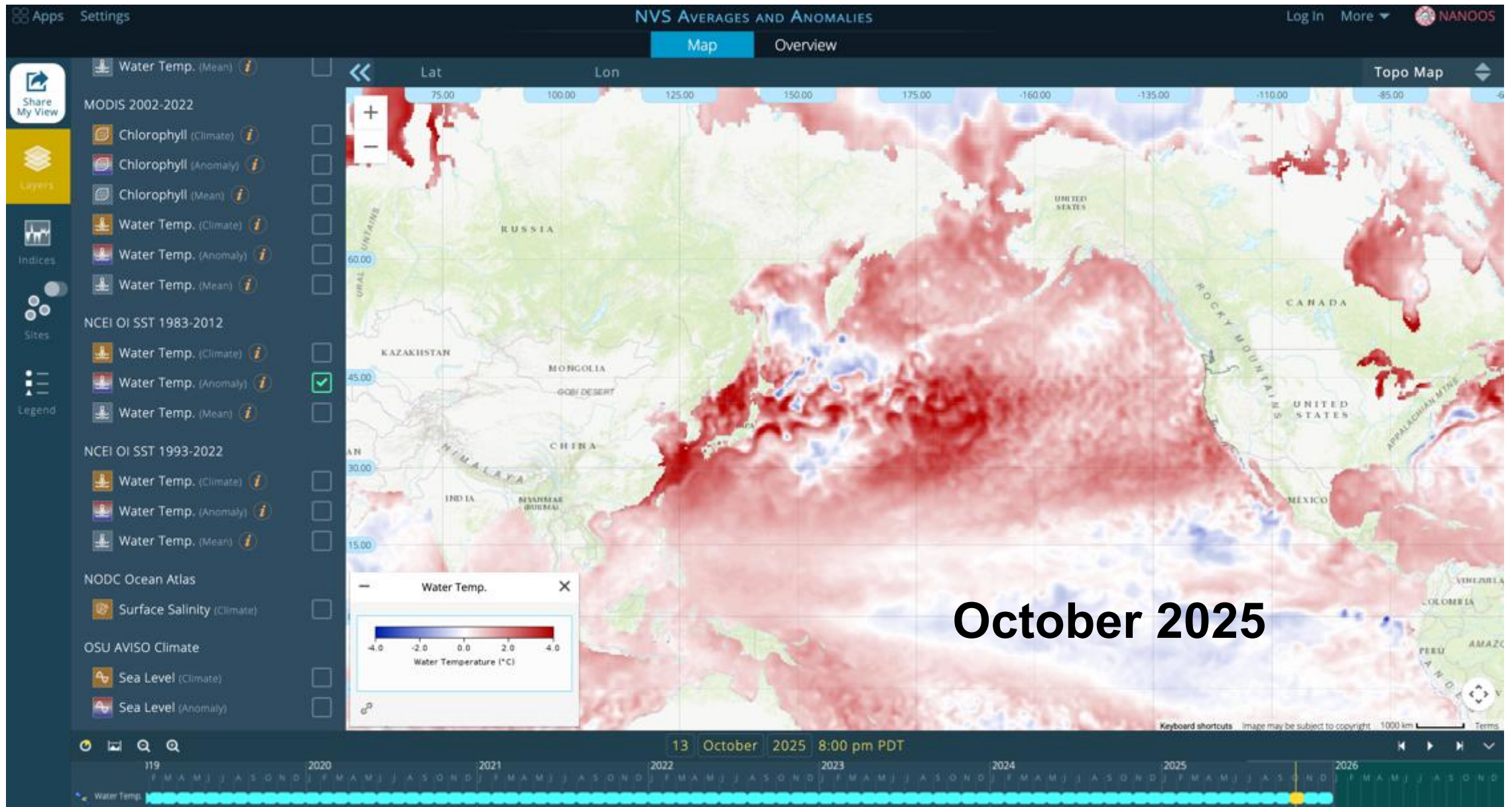
***NANOOS Update***

*Jan Newton on behalf of many*

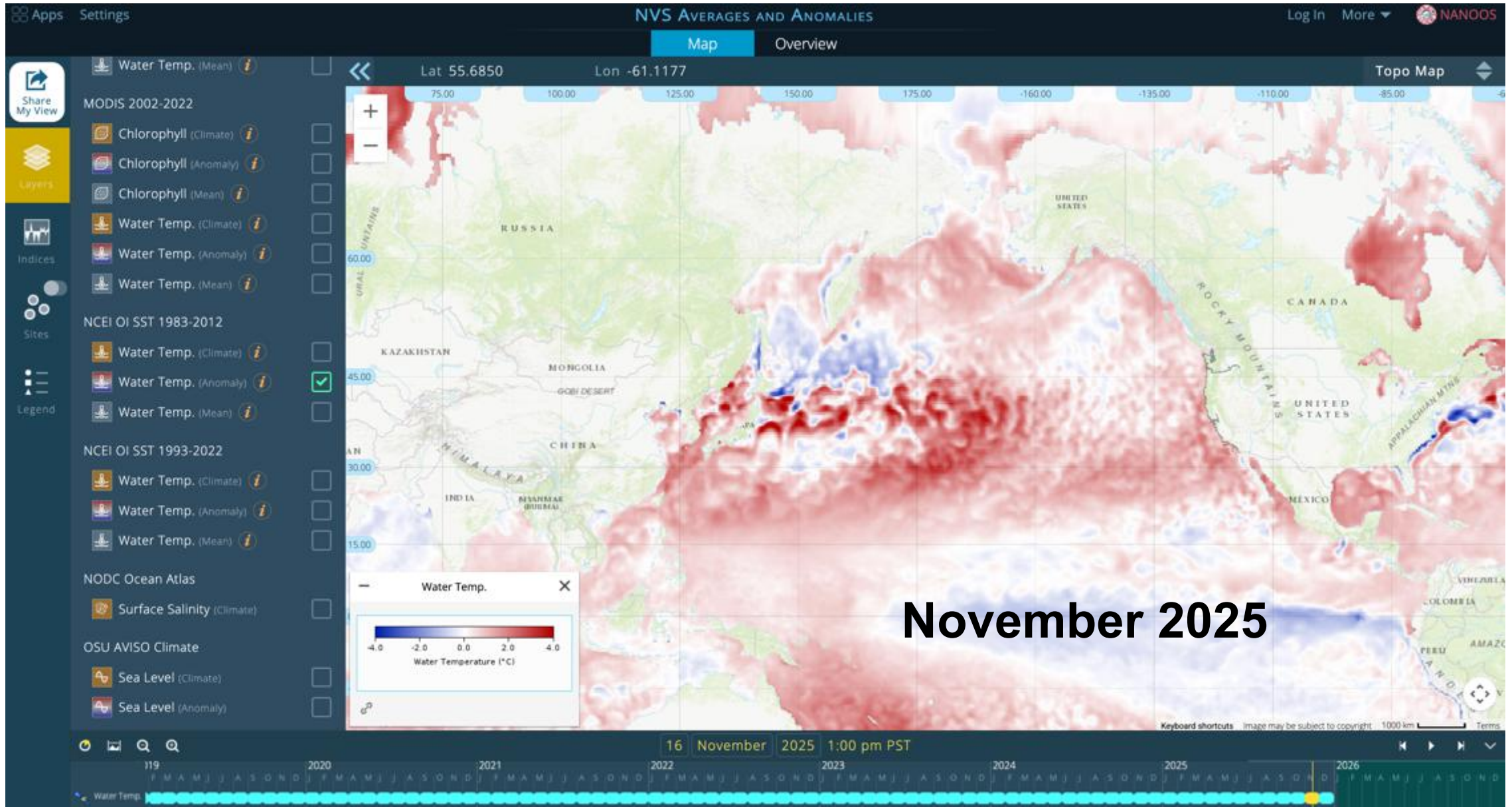
[www.nanoos.org](http://www.nanoos.org)



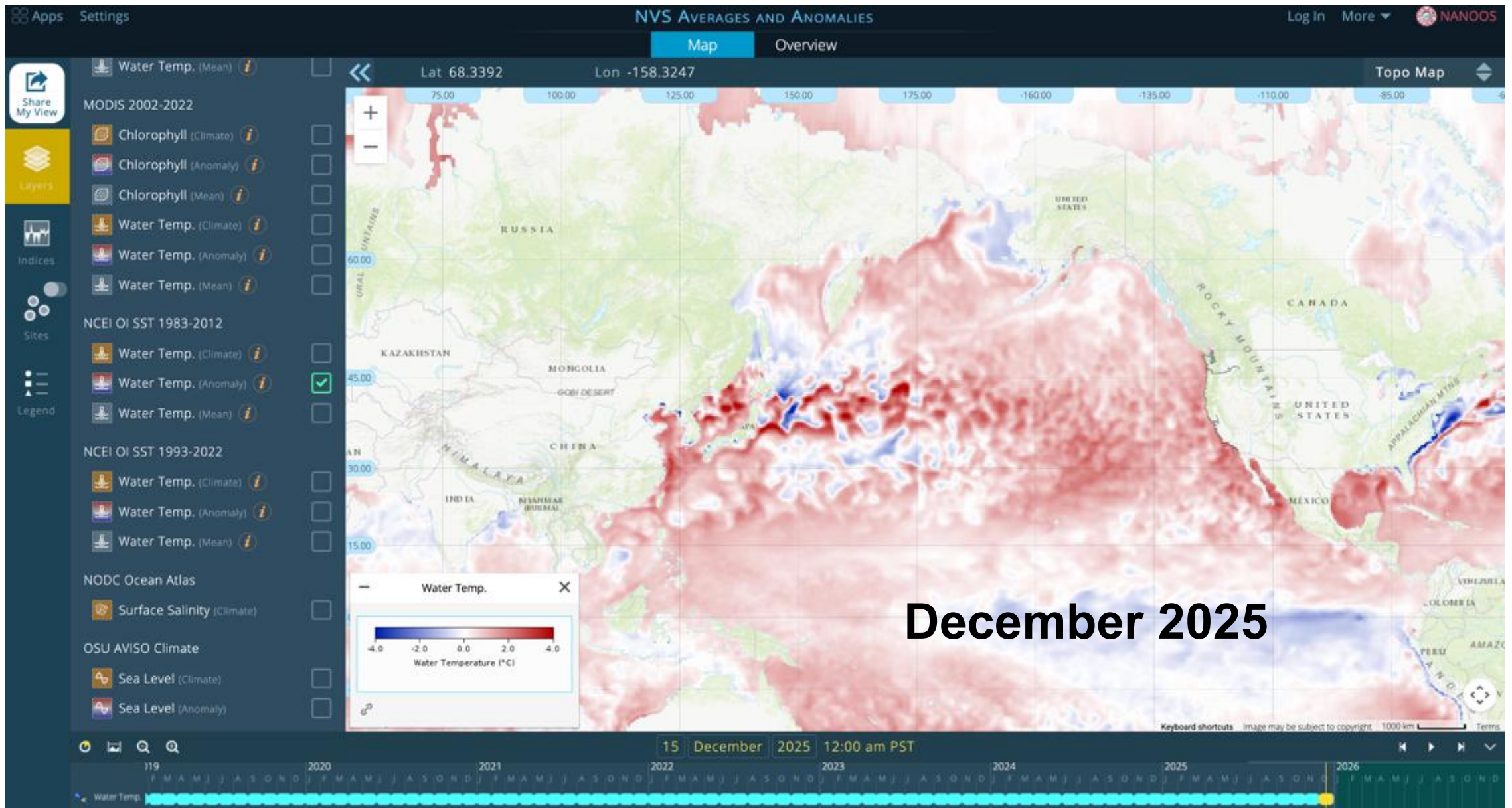
NCEI OI SST vs. 1983-2012



NCEI OI SST vs. 1983-2012



NCEI OI SST vs. 1983-2012



# MARINE HEATWAVES International Working Group

HOME MHW OVERVIEW MHW IMPACTS TRACKER WORKSHOPS AND CONFERENCES PUBLICATIONS MEMBERS CODE



Total cover  
21.2



I Moderate  
15.84



II Strong  
3.69



III Severe  
0.66



IV Extreme  
1.01

Controls



\* Ice mask  ▼

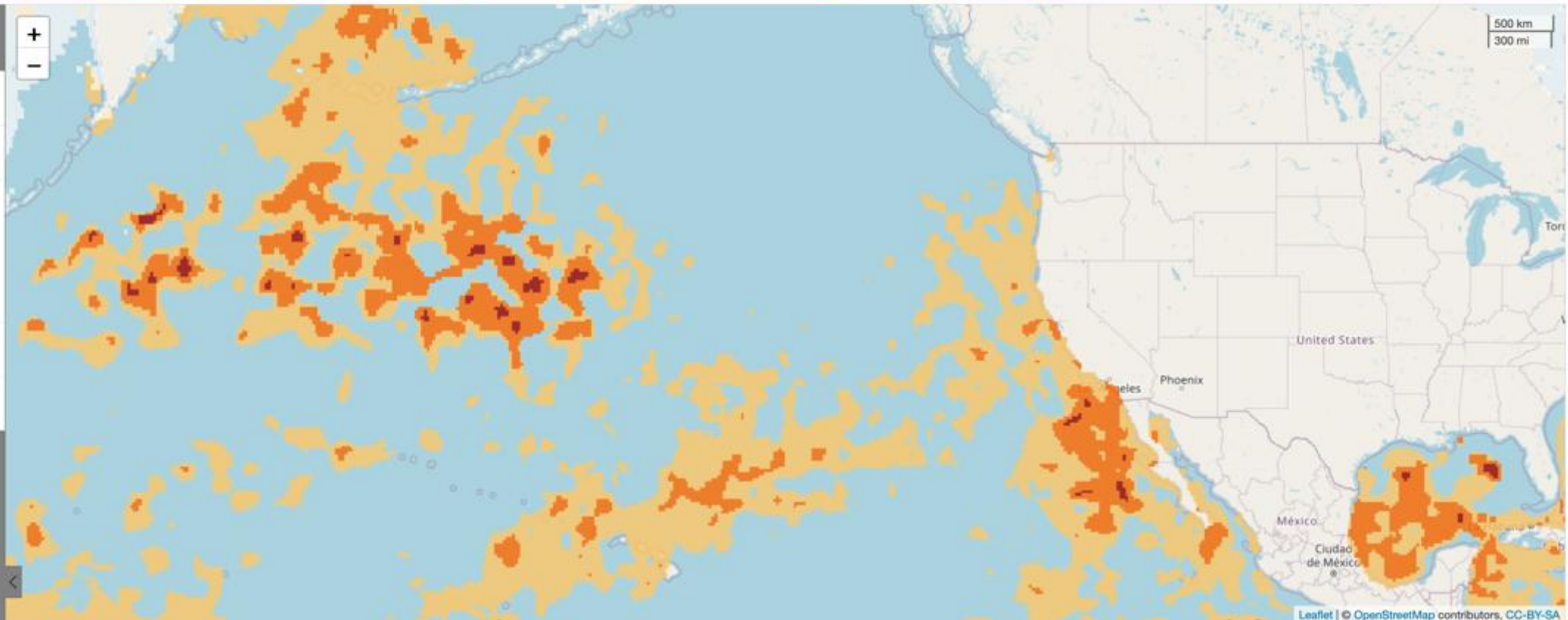
Baseline  ▼

Date  ▲

2026-01-06

Map layer  ▼

Download  ▼



Leaflet | © OpenStreetMap contributors, CC-BY-SA

<http://www.marineheatwaves.org/tracker.html>

# MARINE HEATWAVES International Working Group

HOME MHW OVERVIEW MHW IMPACTS TRACKER WORKSHOPS AND CONFERENCES PUBLICATIONS MEMBERS CODE



Total cover  
21.2



I Moderate  
15.84



II Strong  
3.69



III Severe  
0.66



IV Extreme  
1.01

Controls



\* Ice mask



Baseline



Date

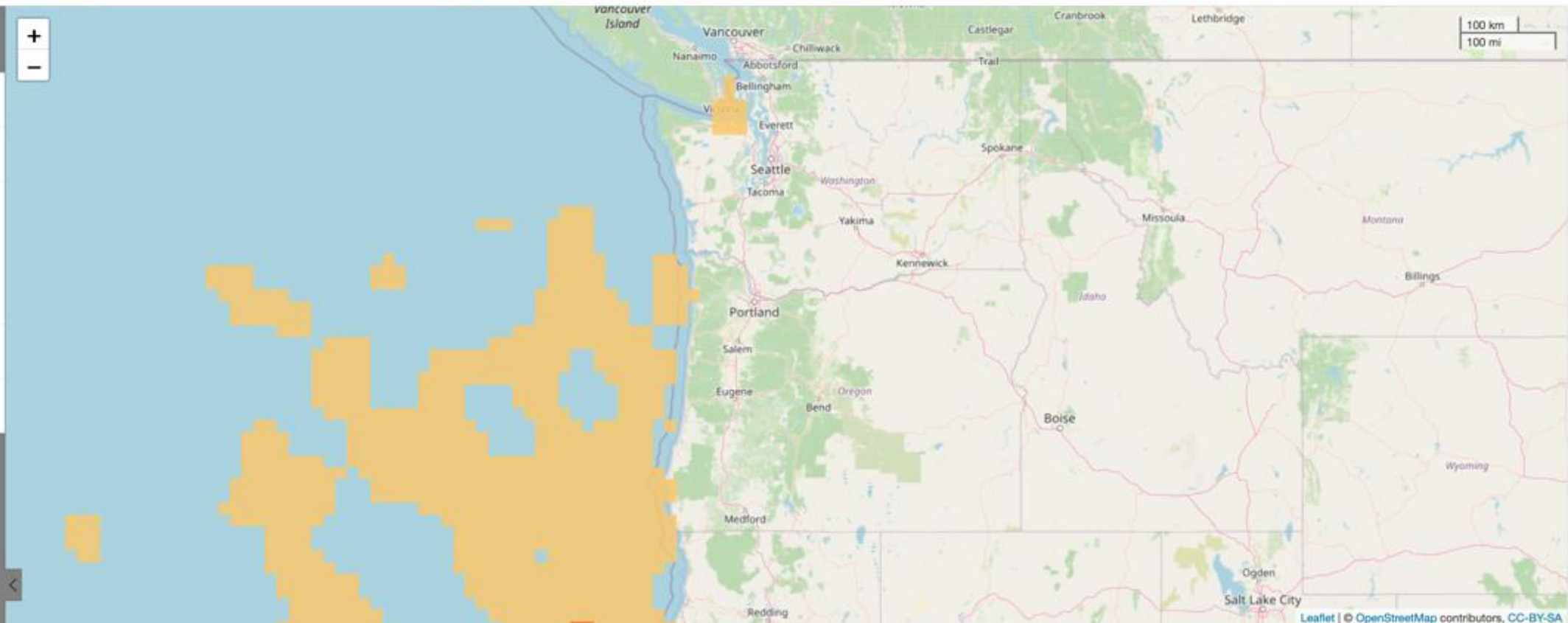


2026-01-06

Map layer



Download



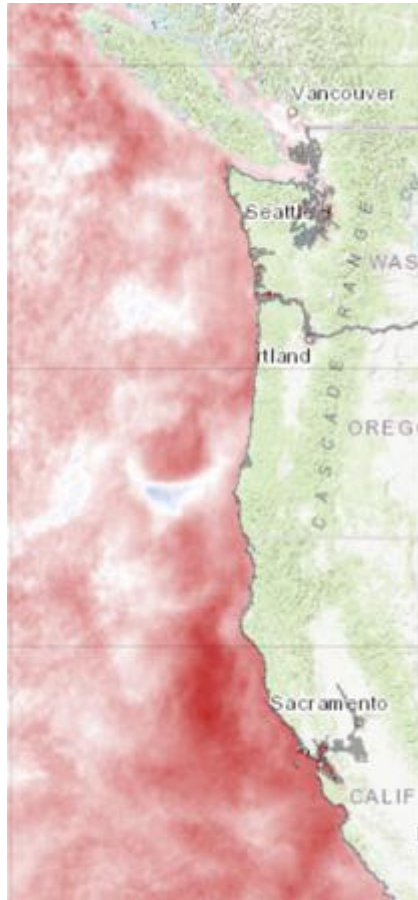
NANOOS: [www.nanoos.org](http://www.nanoos.org)  
<https://nvs.nanoos.org/Climatology>

Climatology app:

Sea Surface Temperature Anomaly  
OSU Modis

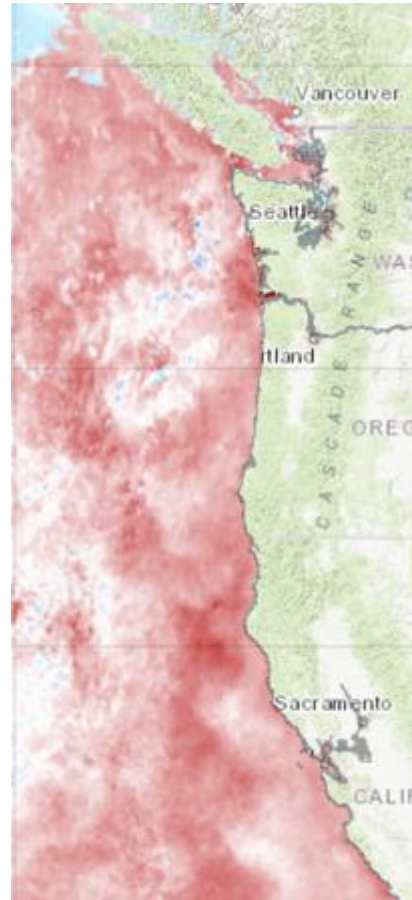
## October 2025

OSU MODIS vs. 2002-2012



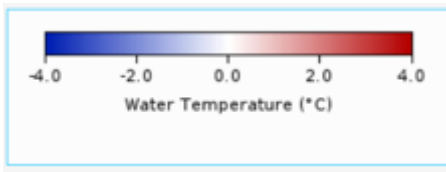
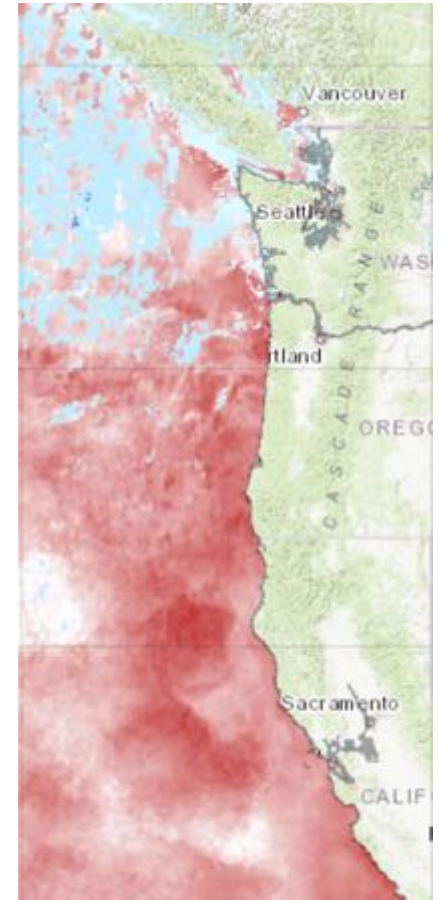
## November 2025

OSU MODIS vs. 2002-2012

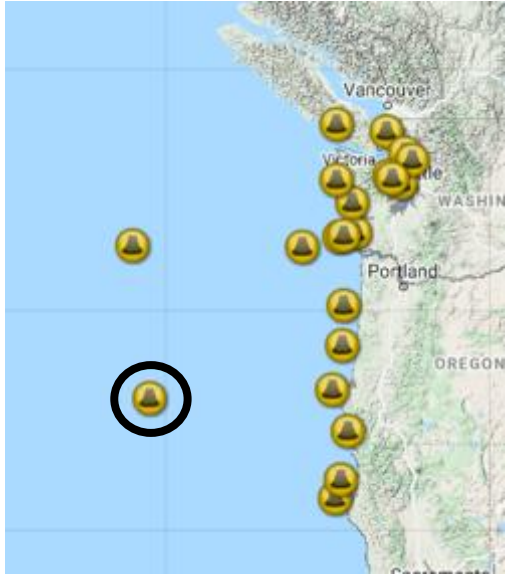


## December 2025

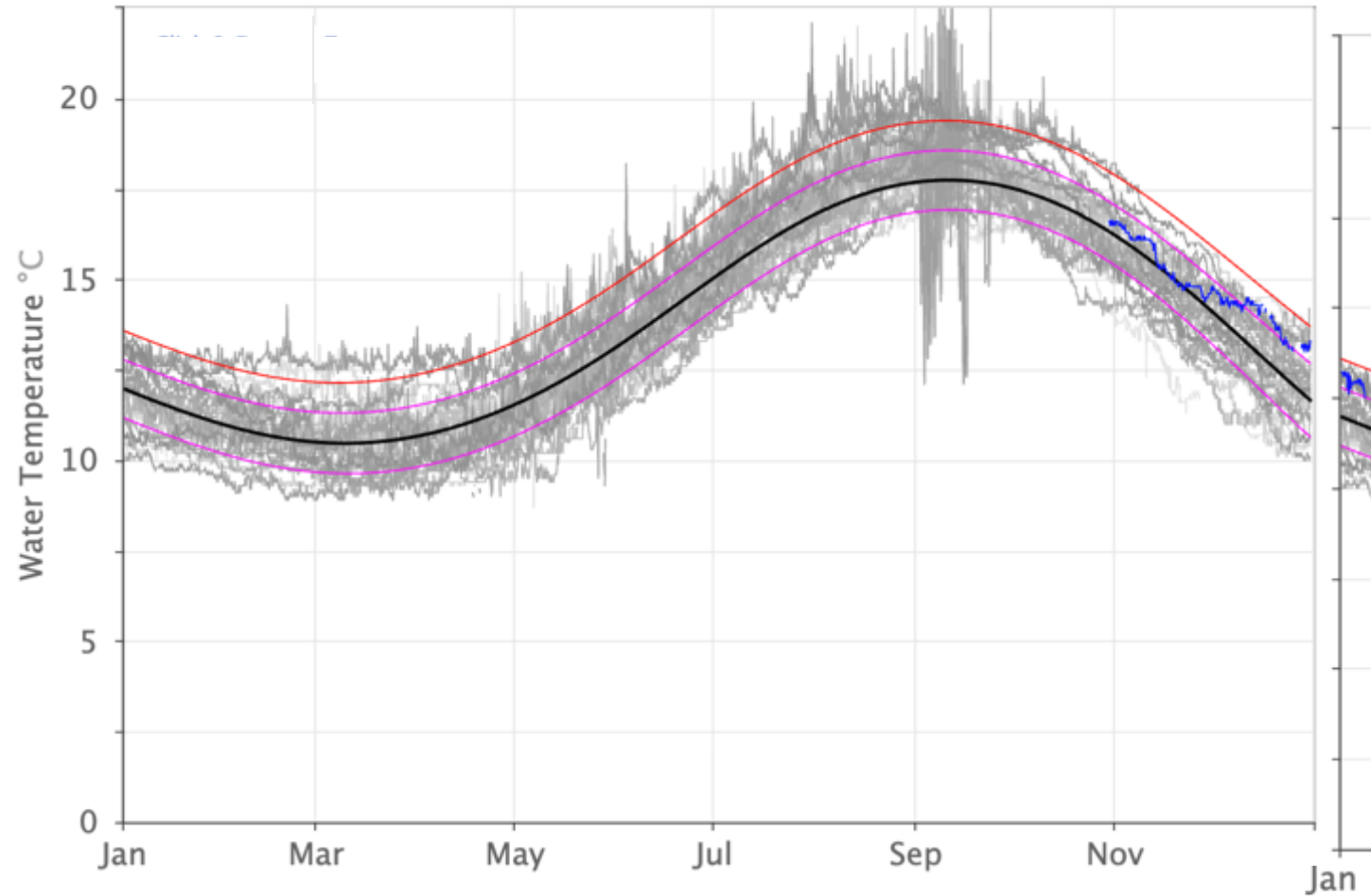
OSU MODIS vs. 2002-2012



~400 km

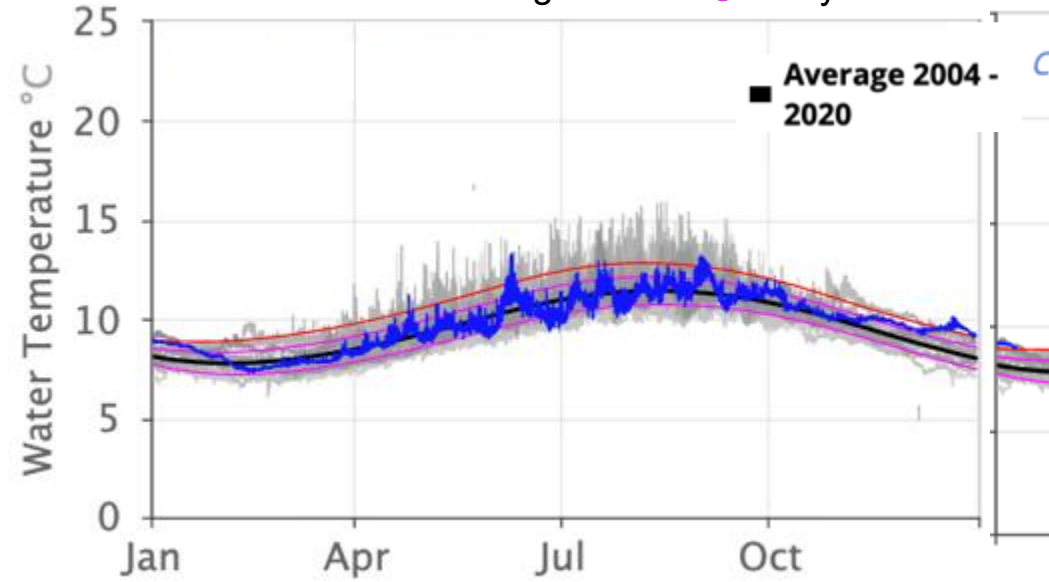


## NDBC Oregon

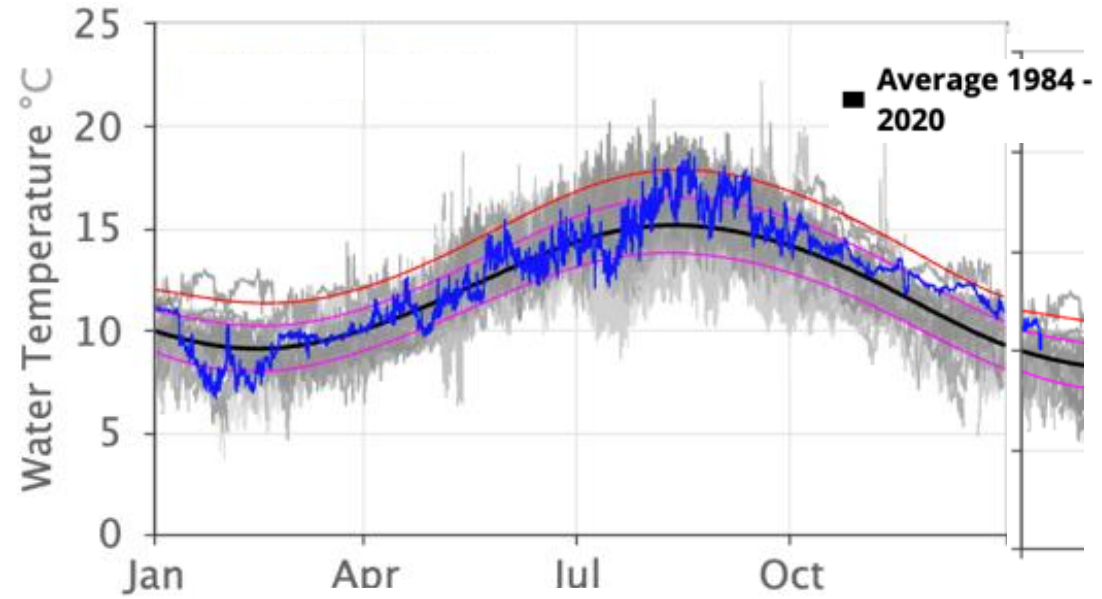


- Average 2004 - 2020
- -1 STD
- +1 STD
- +2 STD
- 2026
- 2025

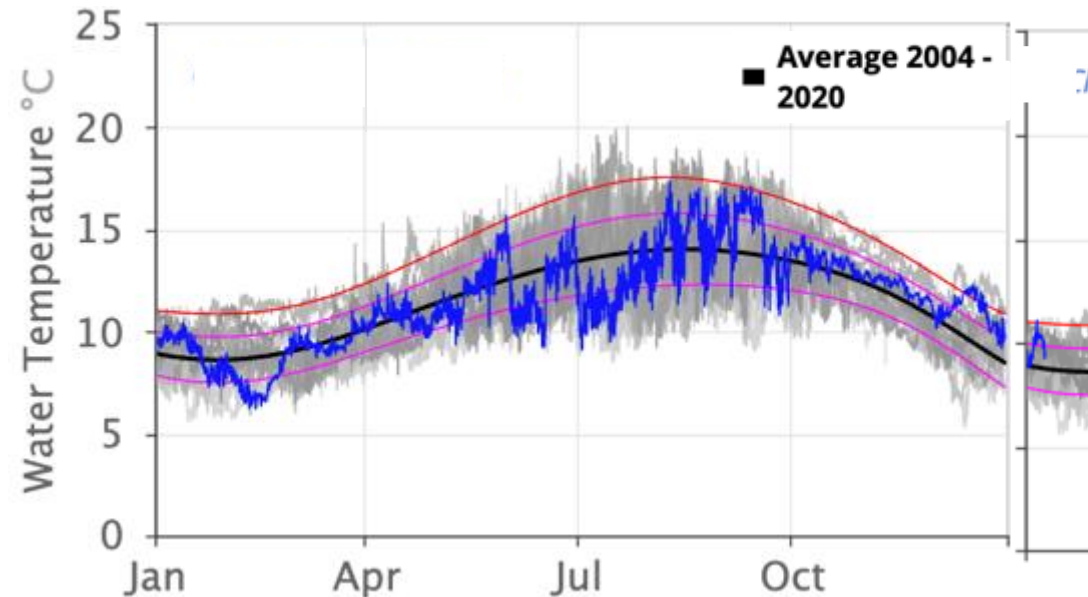
NDBC New Dungeness 17 yrs



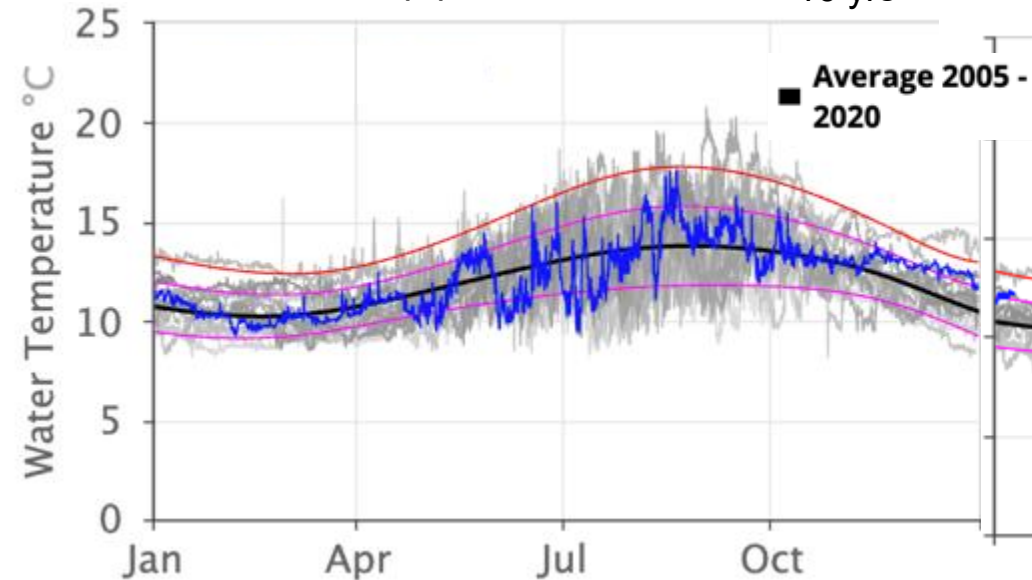
NDBC Columbia River Bar 37 yrs



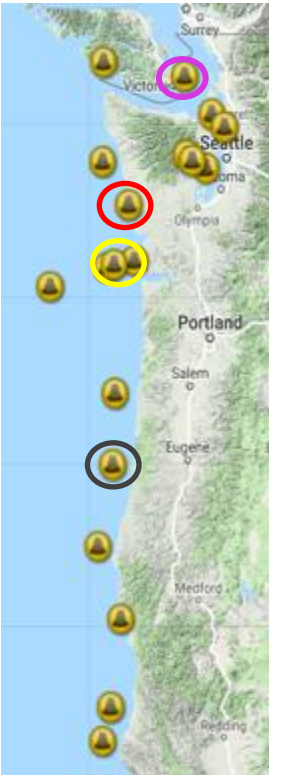
CDIP Grays Harbor 17 yrs



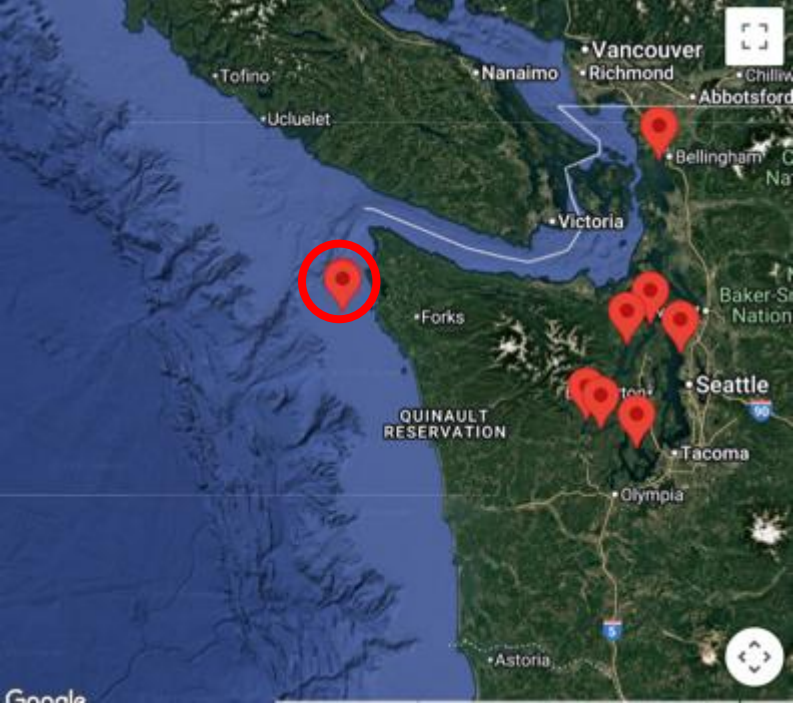
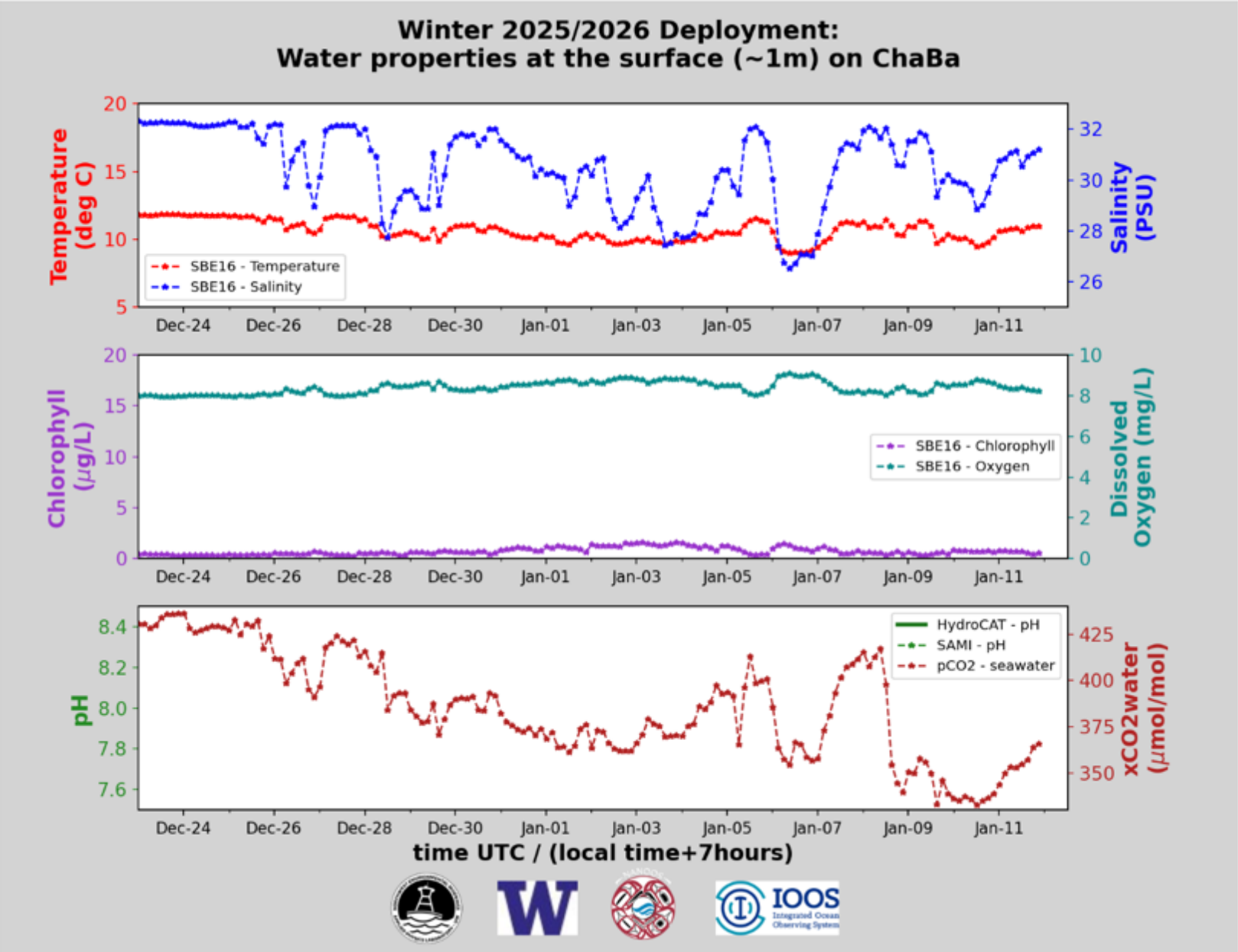
CDIP Umpqua Offshore 16 yrs



- Seasonal Cycle
- -1 STD
- +1 STD
- +2 STD
- 2026
- 2025



# Cha'ba buoy, NANOOS and NOAA OAP support



**UW &  
PMEL**

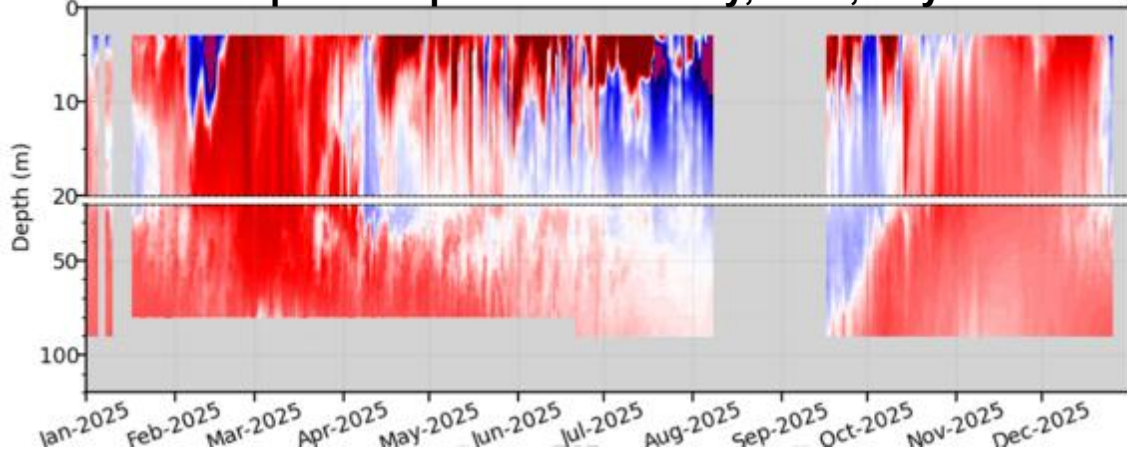


# Temperature Anomalies

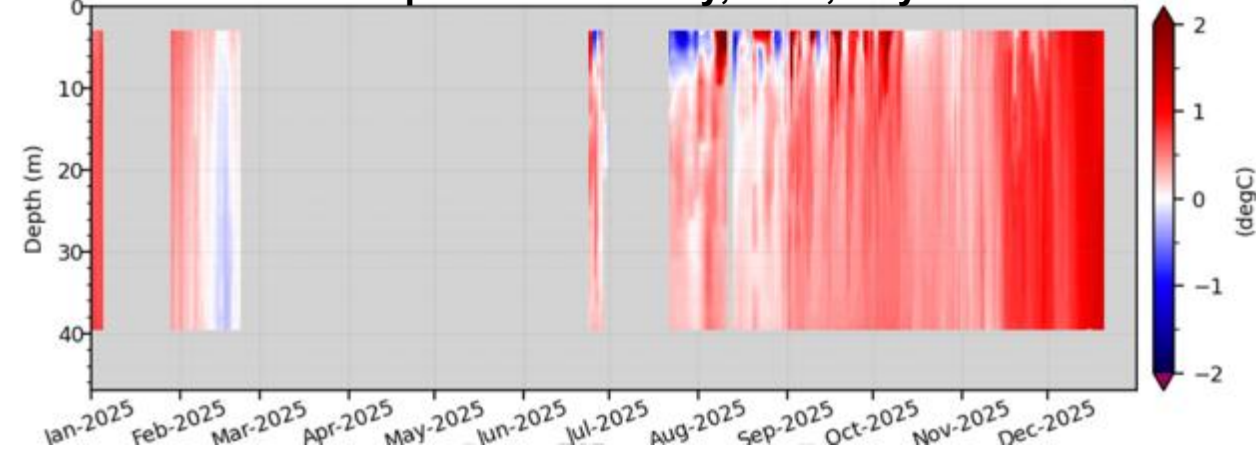
Climatology 2010-2024

# Puget Sound Profiling Buoys

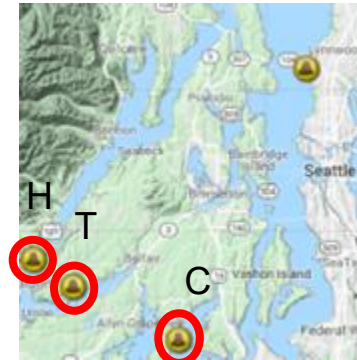
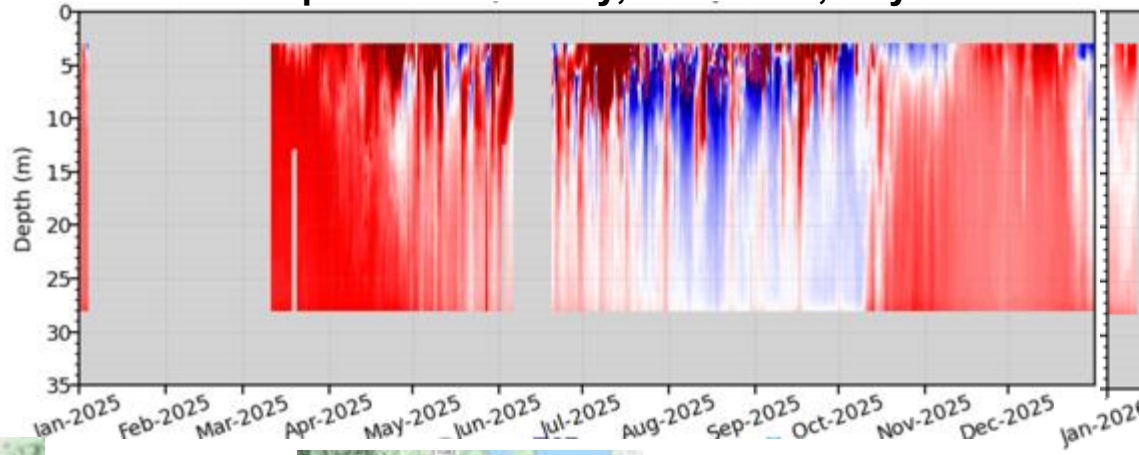
### Hoodsport Temperature Anomaly, 2025, 15 years



### Carr Inlet Temperature Anomaly, 2025, 15 years



### Twanoh Temperature Anomaly, 2025-2026, 15 years

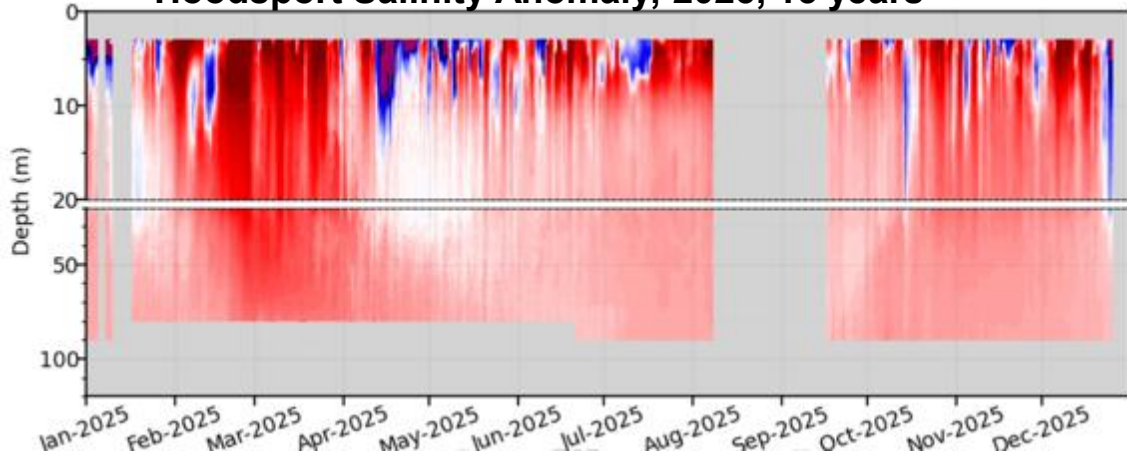


# Salinity Anomalies

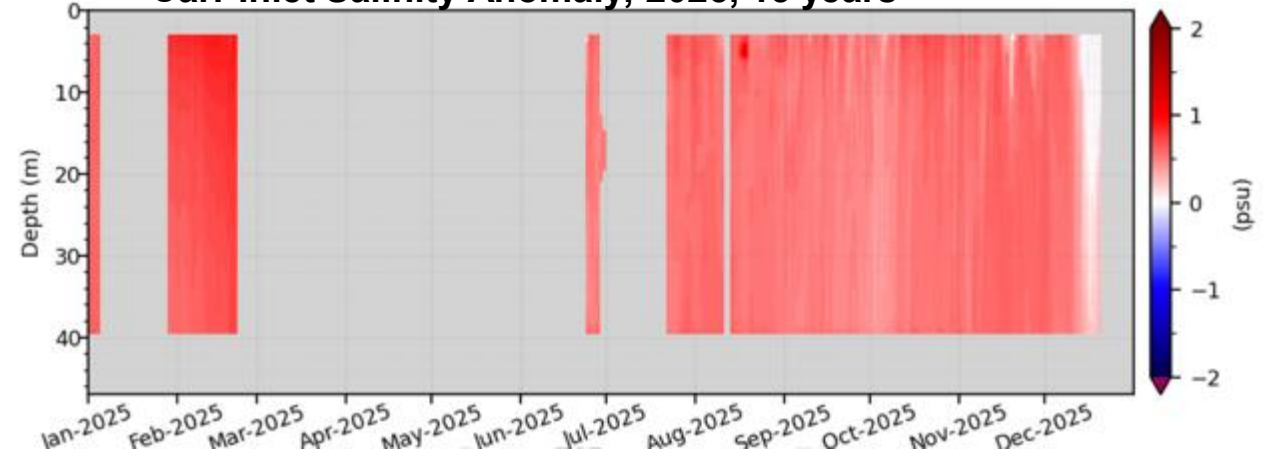
Climatology 2010-2024

# Puget Sound Profiling Buoys

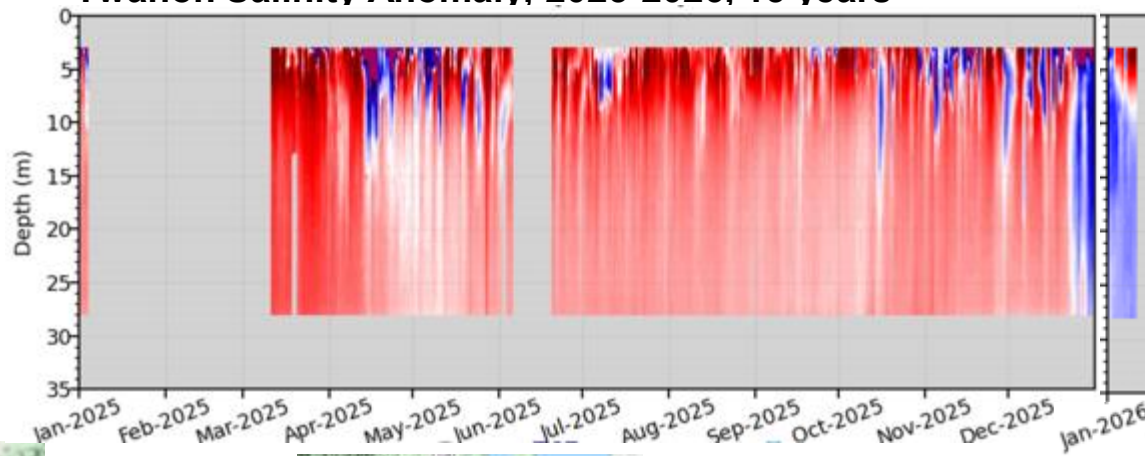
### Hoodsport Salinity Anomaly, 2025, 15 years



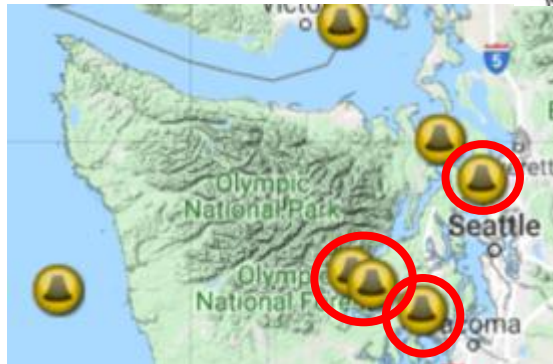
### Carr Inlet Salinity Anomaly, 2025, 15 years



### Twanoh Salinity Anomaly, 2025-2026, 15 years



*Atmospheric river  
Influence?*

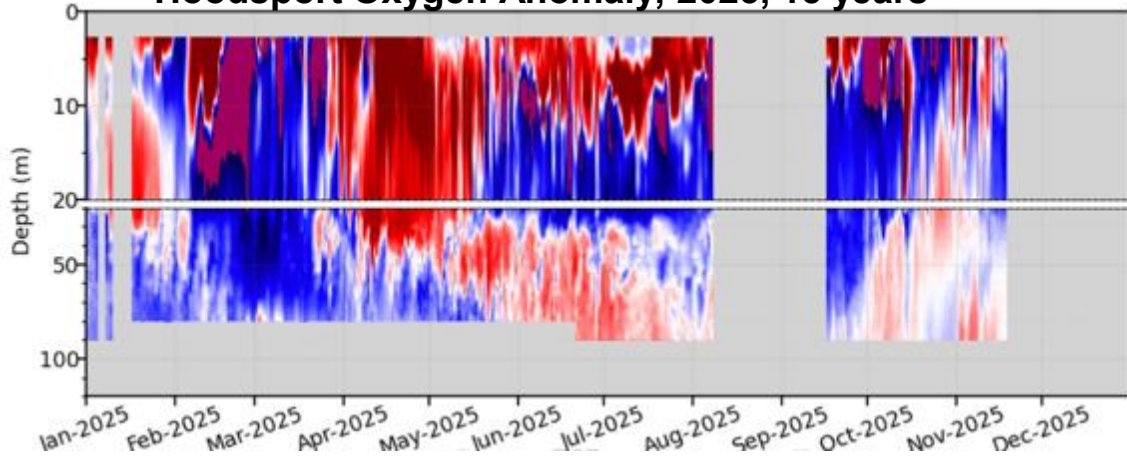


# Dissolved Oxygen Anomalies

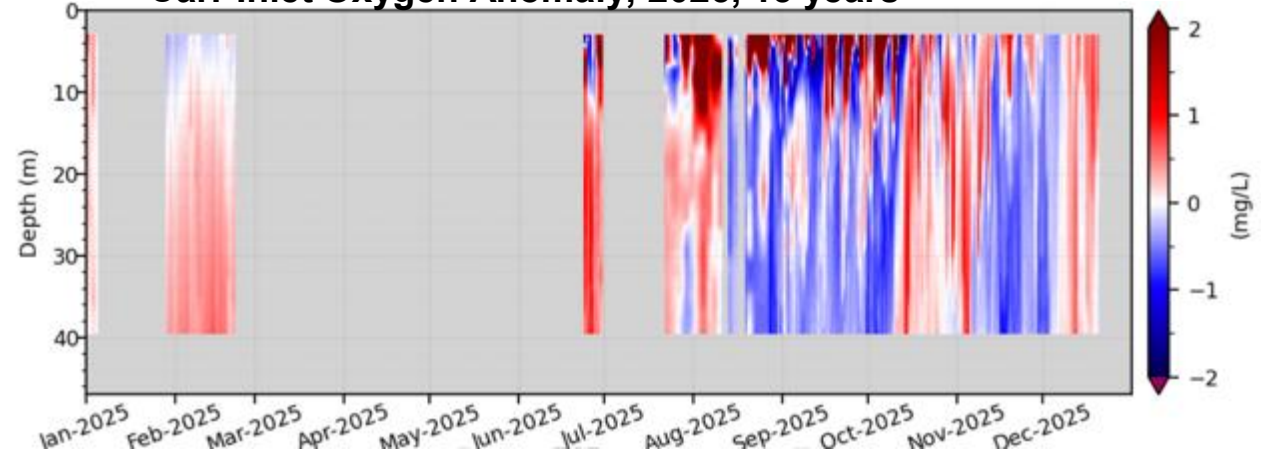
Climatology 2010-2024

# Puget Sound Profiling Buoys

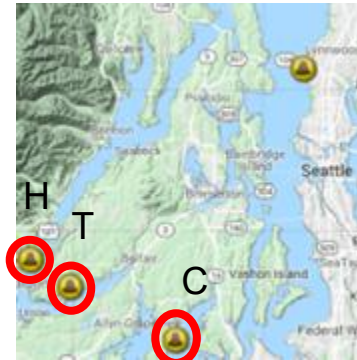
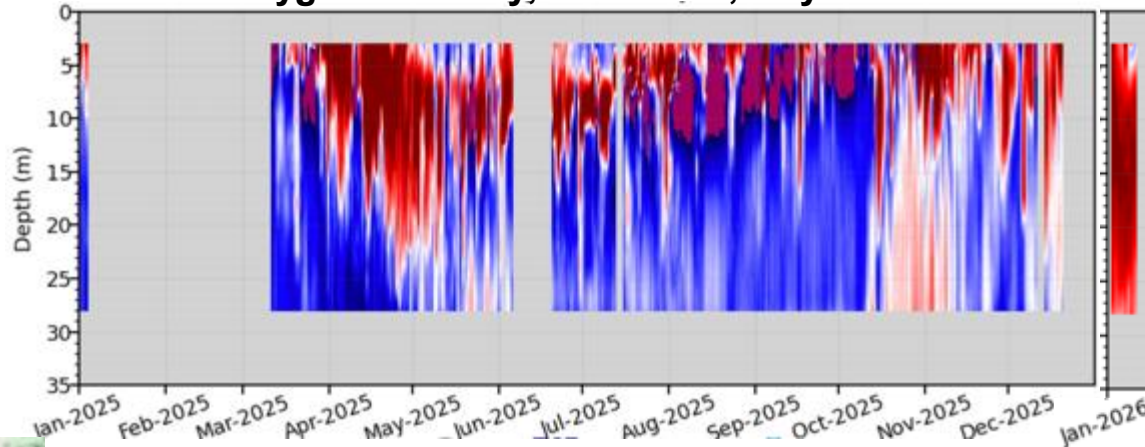
### Hoodsport Oxygen Anomaly, 2025, 15 years



### Carr Inlet Oxygen Anomaly, 2025, 15 years



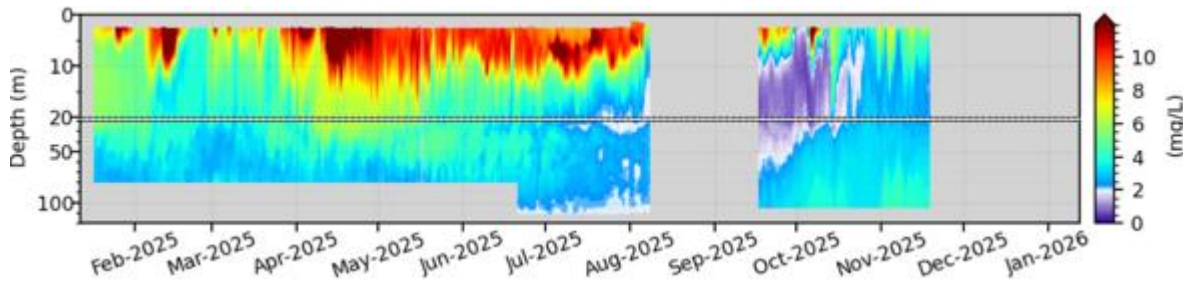
### Twanoh Oxygen Anomaly, 2025-2026, 15 years



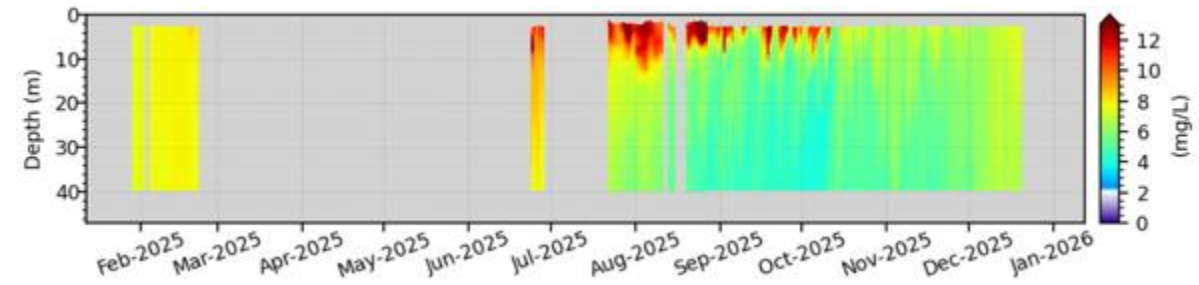
# Dissolved Oxygen Concentration

# Puget Sound Profiling Buoys

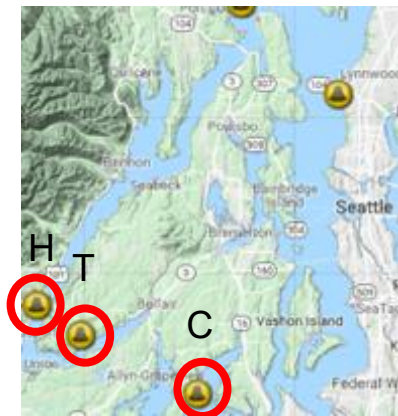
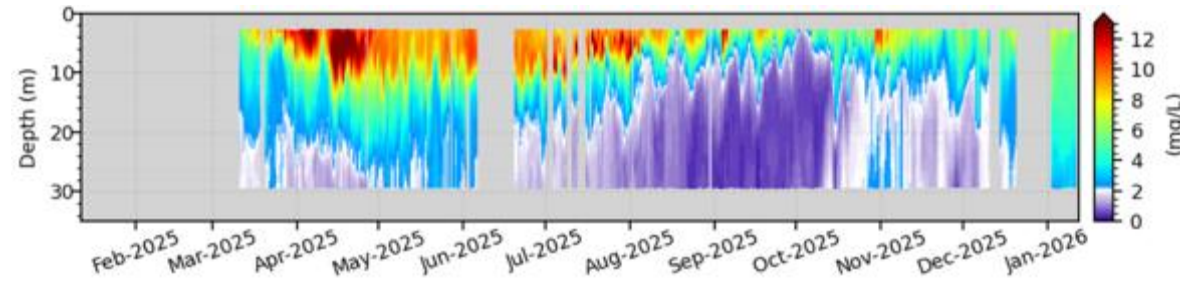
### Hoodsport Oxygen Concentration, 2025-2026



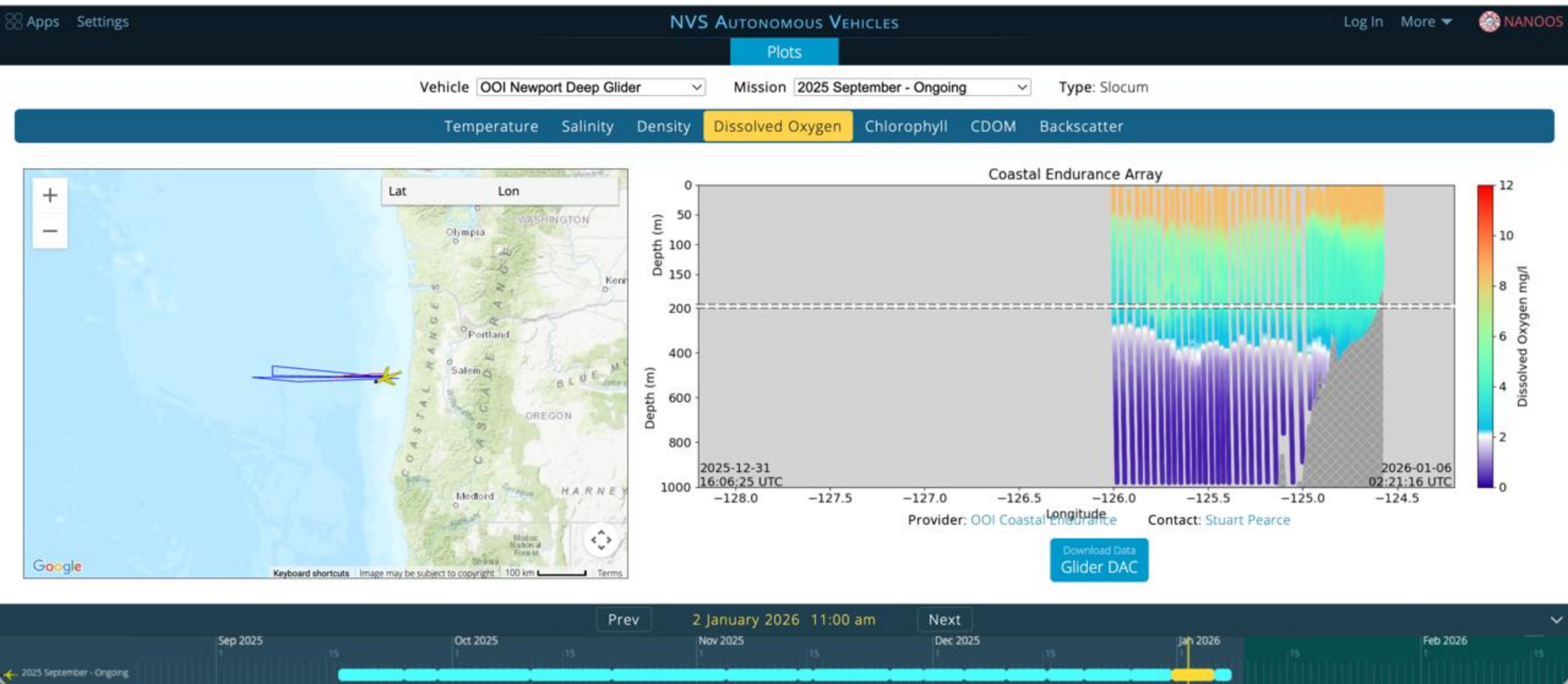
### Carr Inlet Oxygen Concentration, 2025-2026



### Twanoh Oxygen Concentration, 2025-2026



# Dissolved Oxygen from Newport Deep Glider



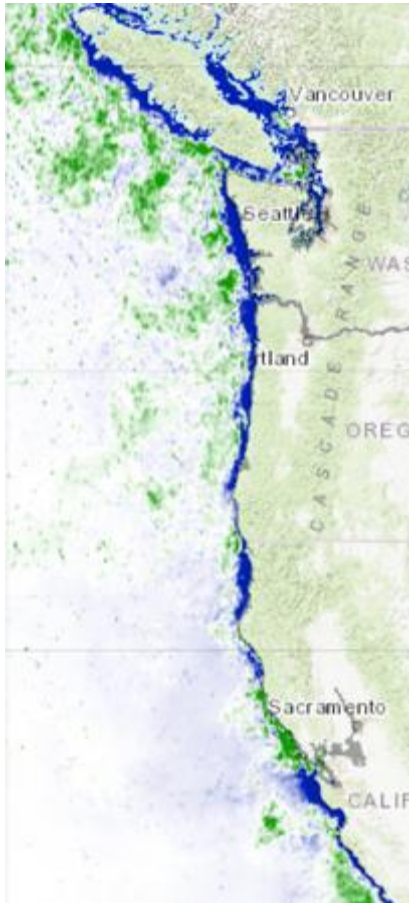
NANOOS: [www.nanoos.org](http://www.nanoos.org)  
<https://nvs.nanoos.org/Climatology>

Climatology app:

Chlorophyll Anomaly  
OSU Modis

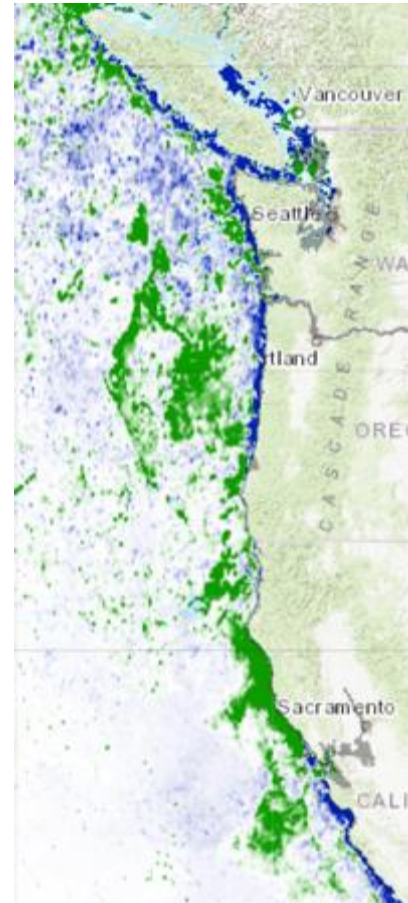
## October 2025

OSU MODIS 2002-2012



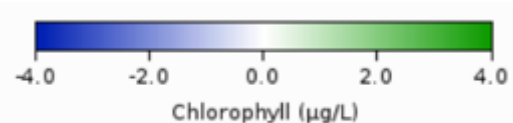
## November 2025

OSU MODIS 2002-2012

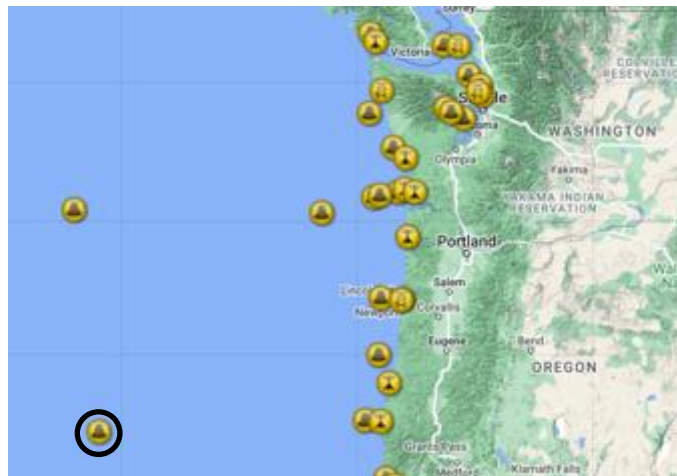


## December 2025

OSU MODIS 2002-2012



# Waves

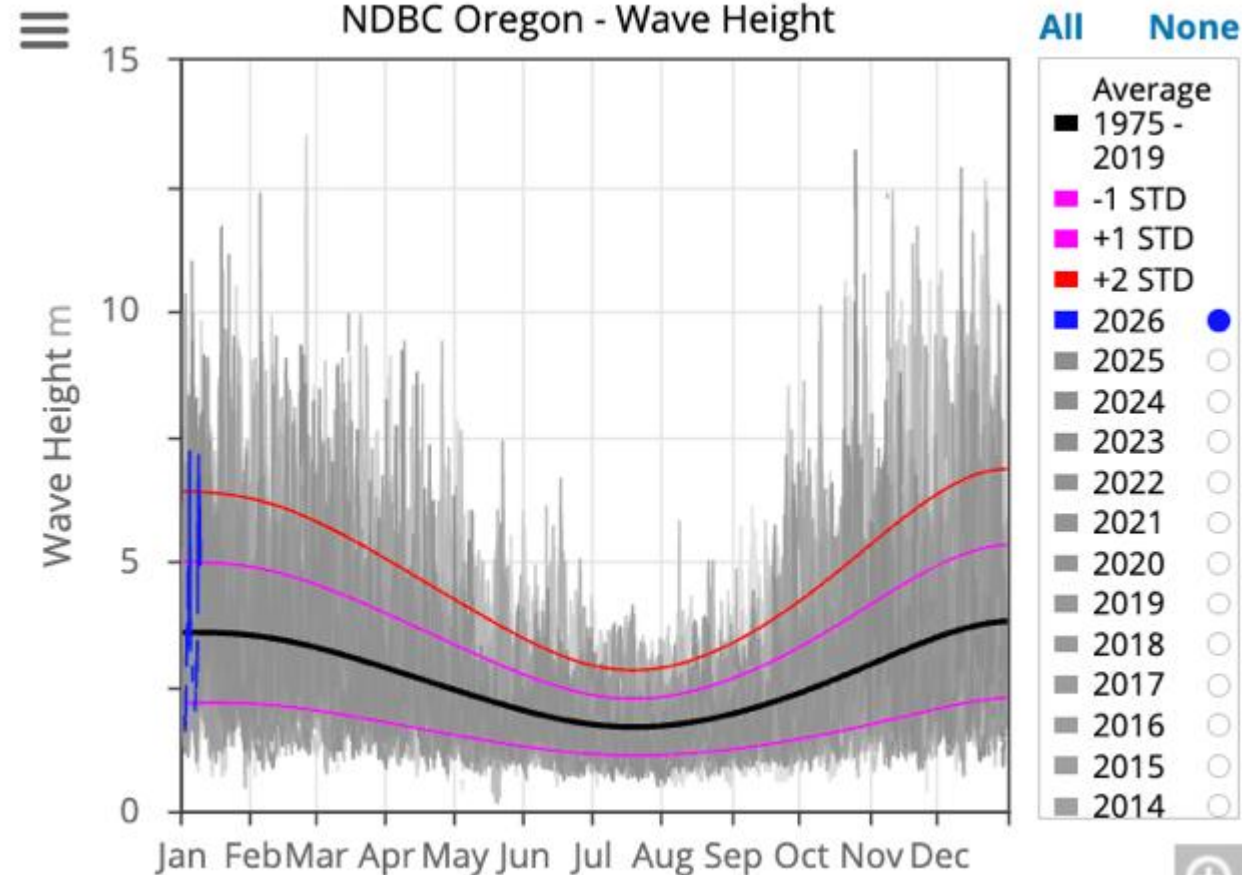
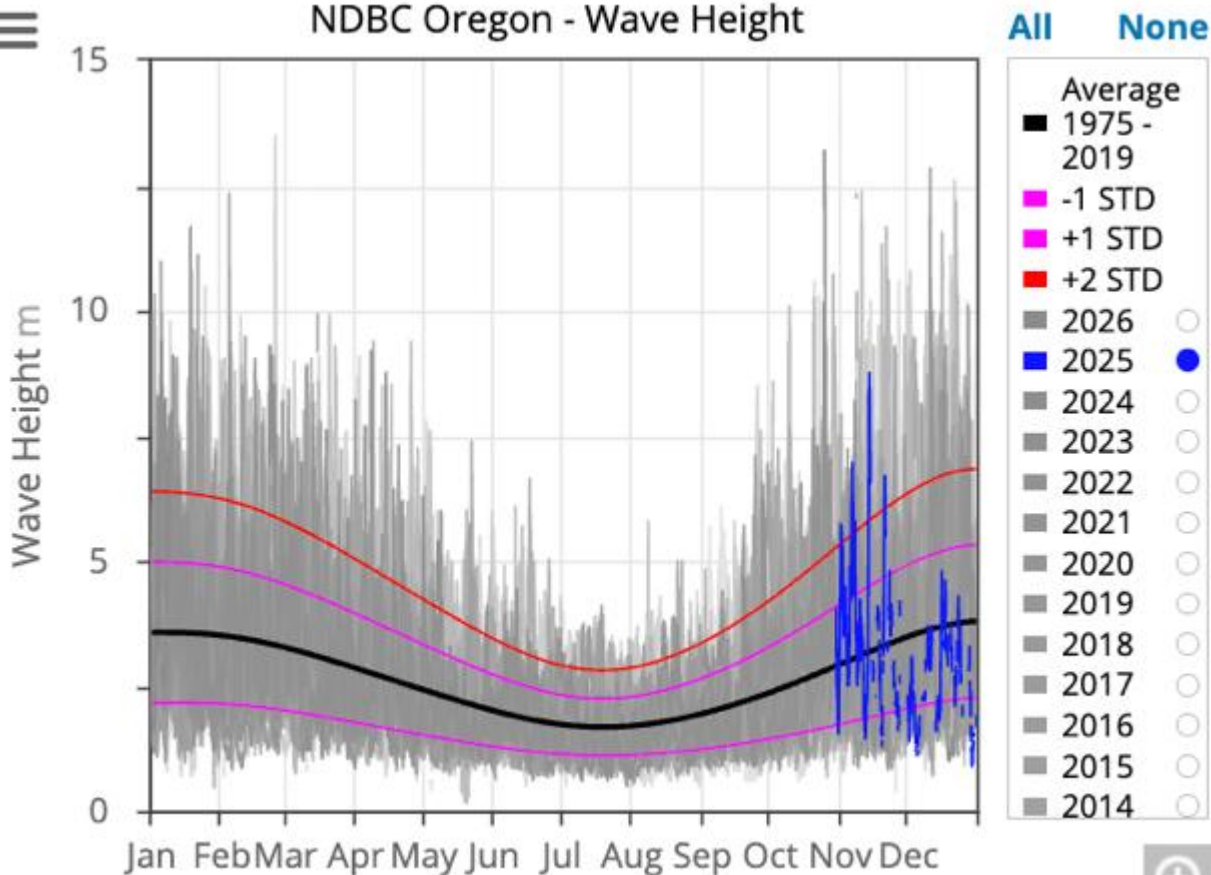


2025

2026

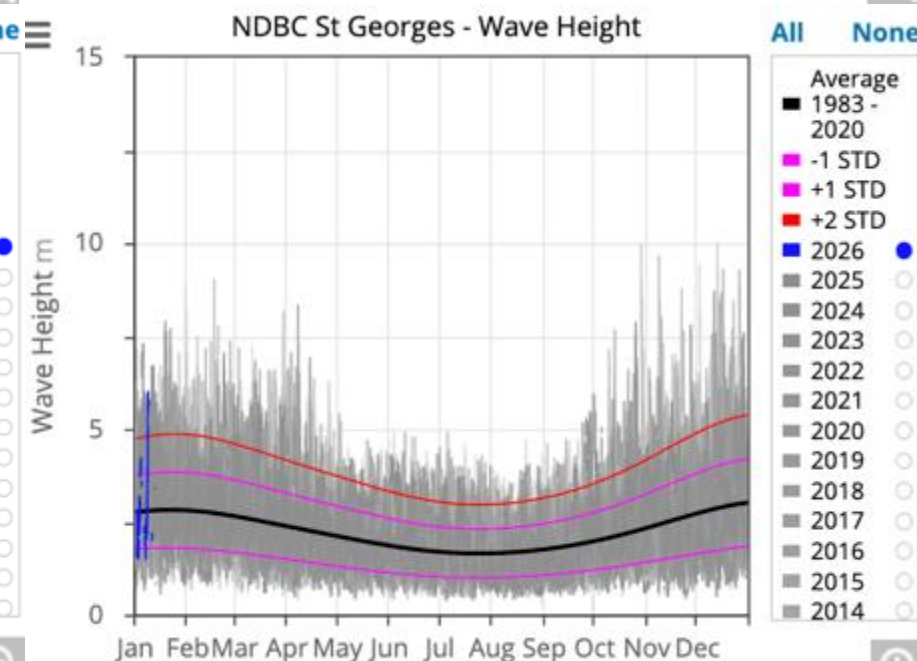
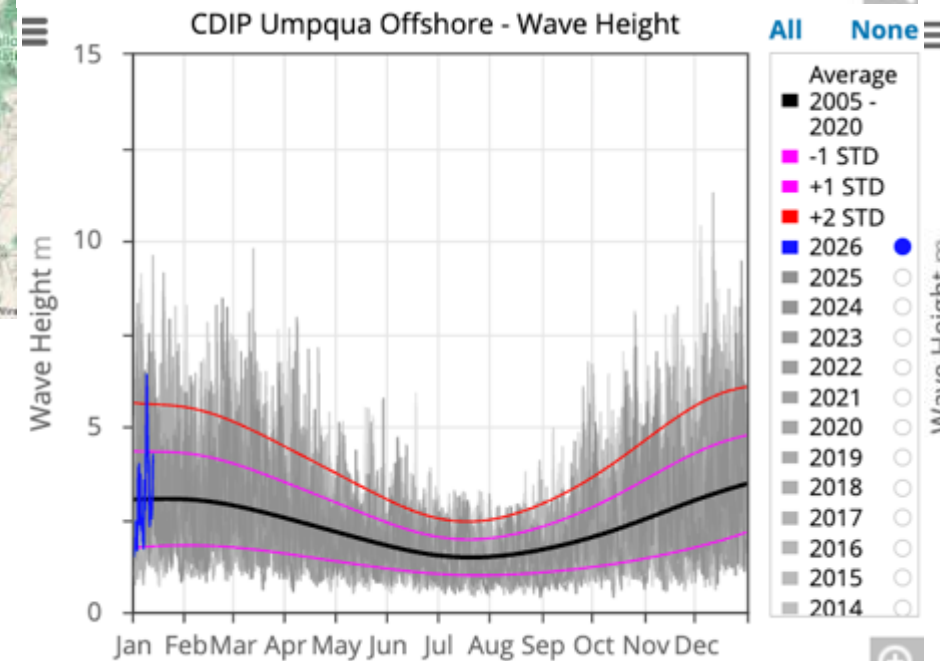
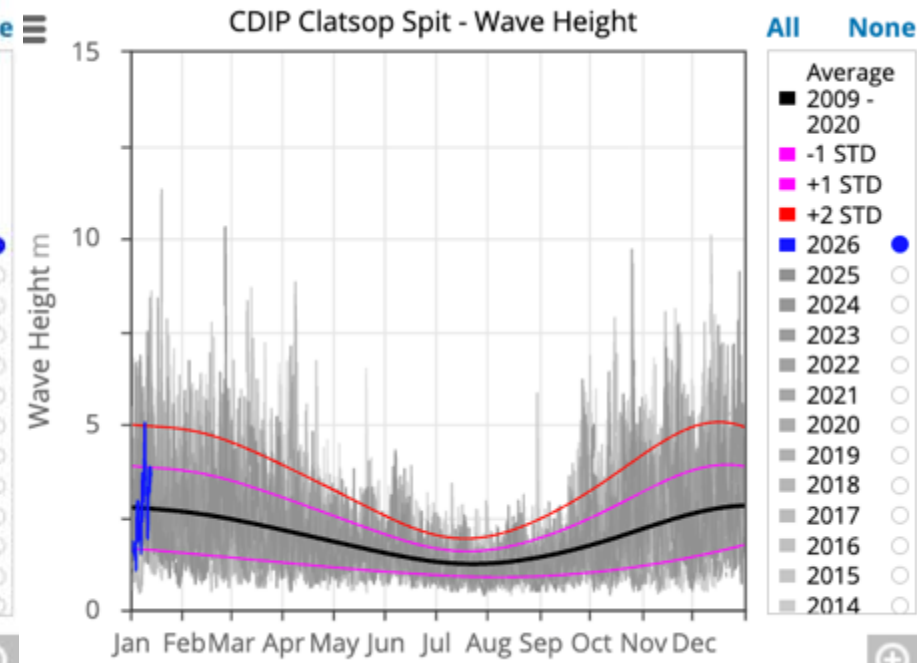
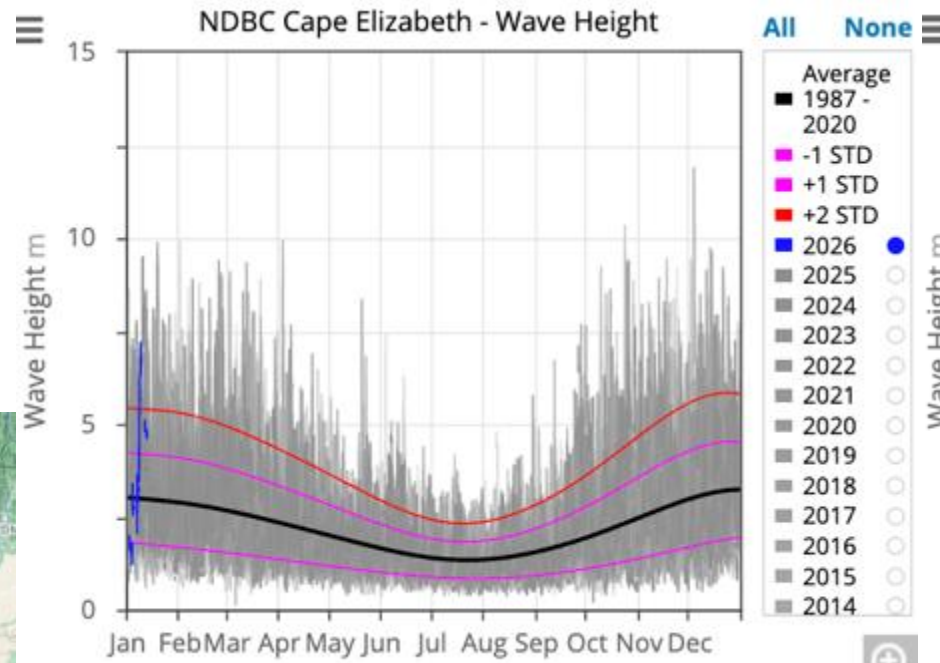
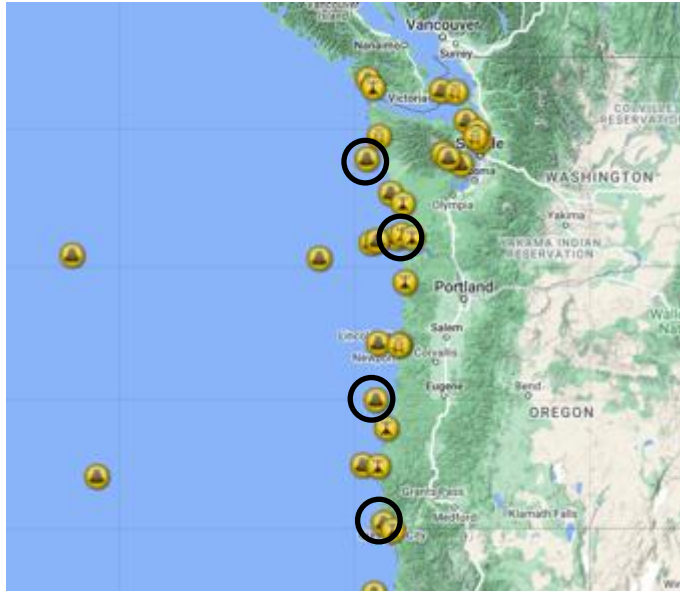
NDBC Oregon - Wave Height

NDBC Oregon - Wave Height



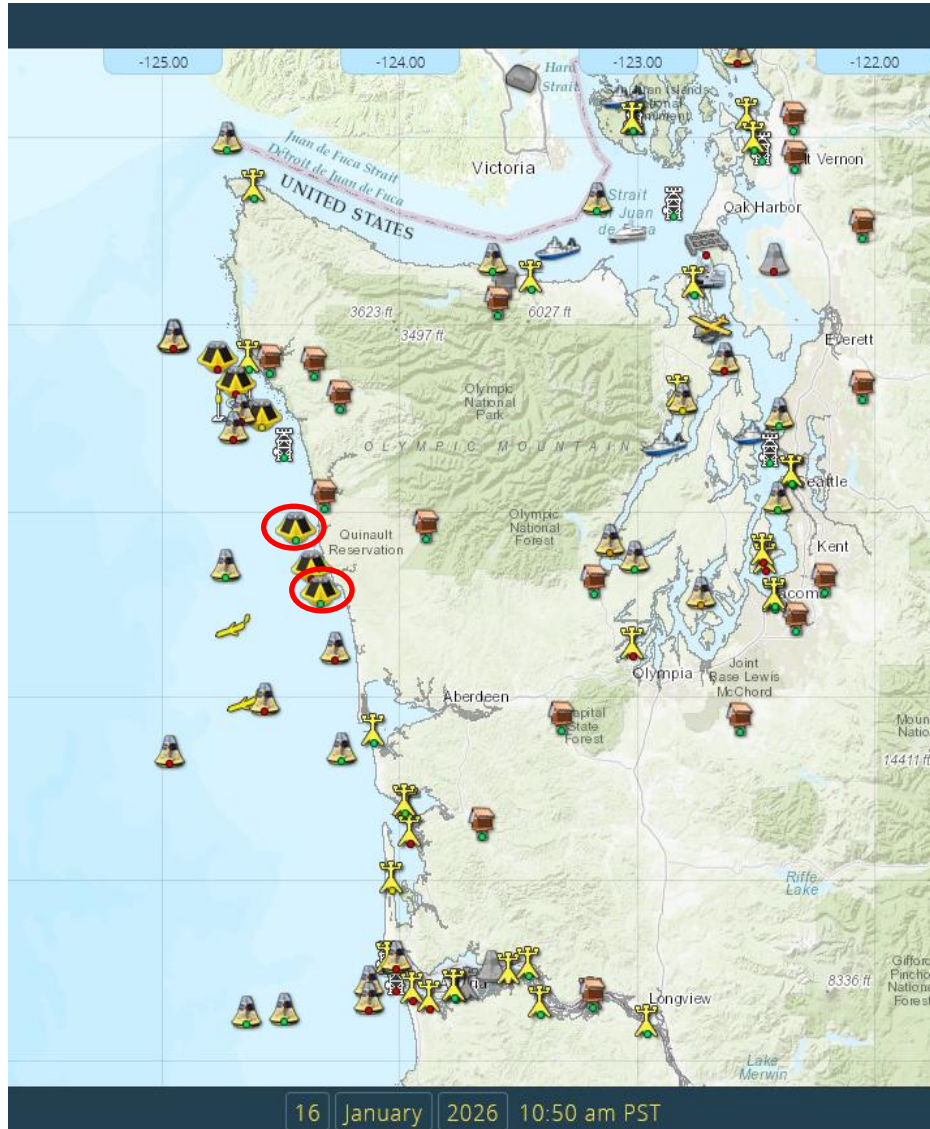
# Waves

## 2026



# Backyard Buoys

## Quinault Indian Nation buoys



9:30 5G

Quinault North  
Washington

New Data Received 10 Minutes Ago  
14 Jan 2026 9:20 am PST  
Lat: 47.453650, Lon: -124.435783

### Standard Information

Wave Height 2.2 m

Wave Period 11 sec

Wave Direction WSW

Wave Spread 18 °

Water Temperature 10 °C

Barometric Pressure 1,034 mbar

### Wind Waves

Wind wave information is not available

Buoys Thresholds Settings Info

9:30 5G

Quinault South  
Washington

New Data Received 35 Minutes Ago  
14 Jan 2026 8:55 am PST  
Lat: 47.283367, Lon: -124.329533

### Standard Information

Wave Height 2.3 m

Wave Period 11 sec

Wave Direction WSW

Wave Spread 18 °

Water Temperature 9 °C

Barometric Pressure 1,034 mbar

### Wind Waves

Wind wave information is not available

Buoys Thresholds Settings Info



## *To summarize:*

### **Temperature, MHWs, Salinity**

- Moderate MHW along Oregon coast
- Temperature somewhat above normal but variable closer to shore
  - Temperature offshore (~400 km) around average in November, between 1-2 SD above average starting in December through present.
  - Temperature nearshore (5-25 km) around average October, variable November – December but some 1- 2 SD above average.
- Strong fresh signal in Puget Sound

### **Oxygen**

- Offshore hypoxia at depth, not coming onto the shelf.
- Hood Canal hypoxia persisted into December but has dissipated.

### **Waves**

- Large storm event in January both offshore and coastal.

### **Blooms & HAB Toxins**

- HAB species presence decreased over the last few months in Washington, currently none observed.
- Razor clam and mussel closures off and on in Oregon, razor clam closure persisting in Southern Oregon due to DA.

The background features a light gray, stylized pattern of overlapping leaves and a bird, possibly a penguin, in the center. The leaves are elongated and pointed, while the bird is depicted in profile, facing left. The entire pattern is set against a white background.

[www.nanoos.org](http://www.nanoos.org)

[janewton@uw.edu](mailto:janewton@uw.edu)