



NANOOS

NORTHWEST ASSOCIATION OF NETWORKED OCEAN OBSERVING SYSTEMS



NVS Boaters NVS Maritime Ops

Rachel Wold
rwold@uw.edu

NANOOS Workshop, OCCC July 13, 2017

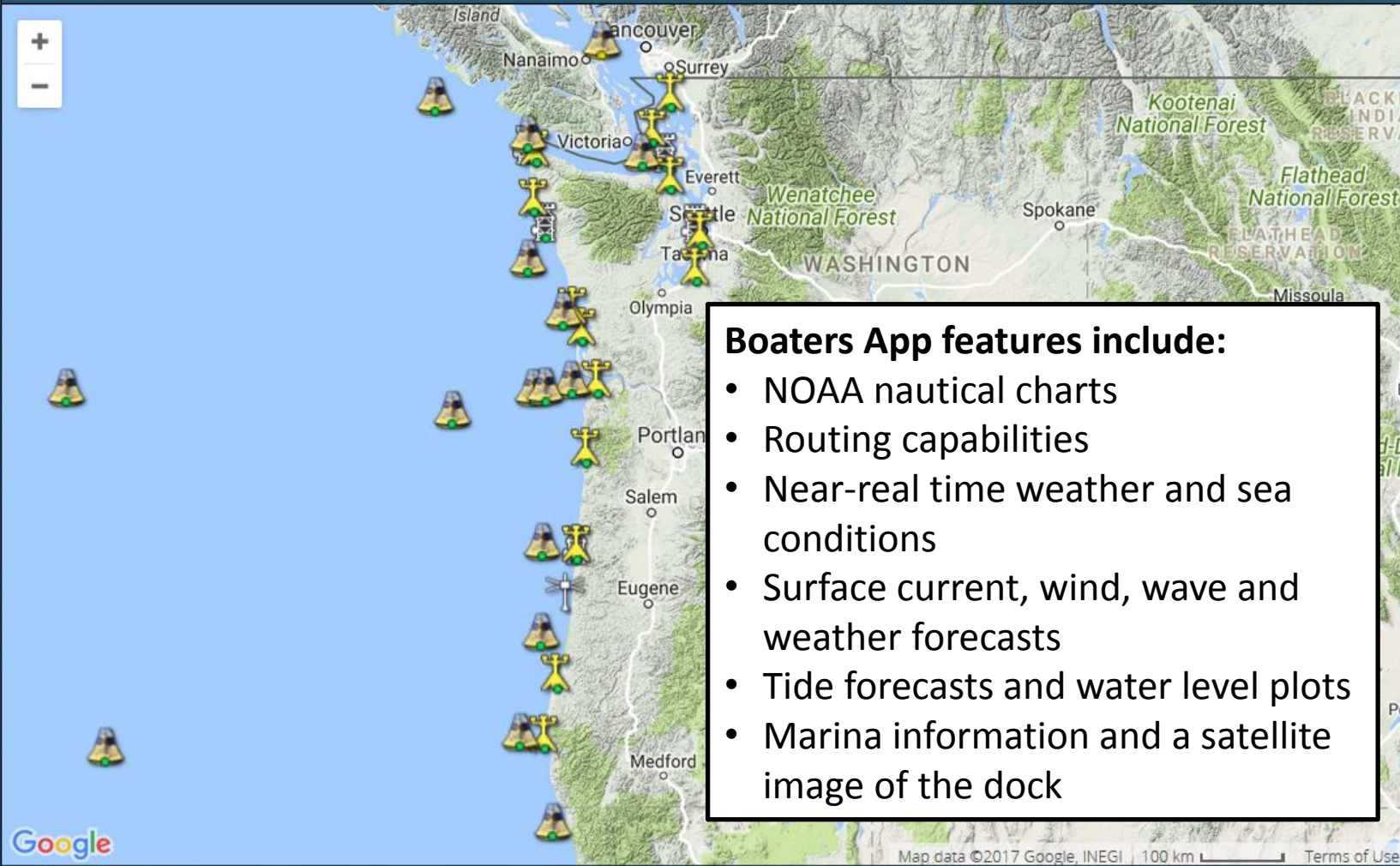


Lat: 49.6508

Lon: -119.9927

Terrain

- Charts
- Regions
- Routes
- Current Conditions
- Fixed Platforms
- Remote Sensing
- Forecasts
- Markers
- Legend



Boaters App features include:

- NOAA nautical charts
- Routing capabilities
- Near-real time weather and sea conditions
- Surface current, wind, wave and weather forecasts
- Tide forecasts and water level plots
- Marina information and a satellite image of the dock



NANOOS

NORTHWEST ASSOCIATION OF NETWORKED OCEAN OBSERVING SYSTEMS



Apps Disclaimer Settings Log In

NVS
BOATERS

v5.4 Contact NANOOS

Powered by Vizer

Map Help

Routes

Lat: 44.5733

Lon: -124.0530

Terrain

+ New Route

Click the 'New Route' button to start a new route.

If you sign in, route information will automatically be saved to your account.



Google

Map data ©2017 Google

1 km

Terms of Use

13 July 2017 9:00 pm PDT





NANOOS

NORTHWEST ASSOCIATION OF NETWORKED OCEAN OBSERVING SYSTEMS



Apps Disclaimer Settings Log In

NVS BOATERS

v5.4 Contact NANOOS

Powered by Vizer

Map Help

Routes

Lat: 44.5869

Lon: -124.0114

Terrain

+ New Route

Yaquina to Coast

Color and style controls

	Latitude	Longitude	
1	44.60181	-124.01058	X
2	44.61269	-124.02157	X
3	44.61929	-124.02397	X
4	44.62295	-124.03599	X
5	44.62833	-124.04097	X
6	44.62808	-124.05144	X
7	44.62100	-124.05951	X
8	44.61697	-124.06397	X
9	44.60853	-124.08611	X

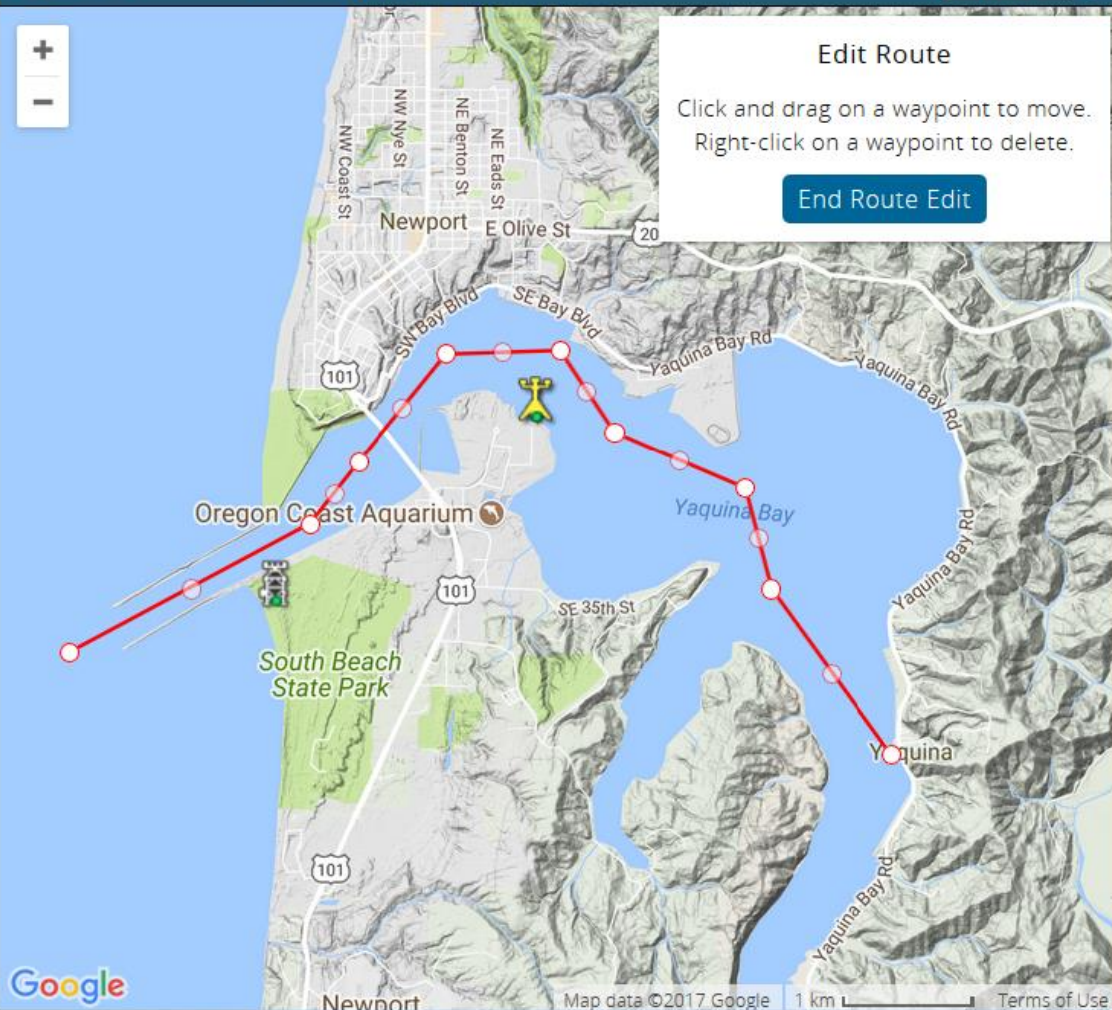
Total Route Length: 5.2 miles

Download Route

Edit Route

Click and drag on a waypoint to move.
Right-click on a waypoint to delete.

End Route Edit



Google

Newport Map data ©2017 Google 1 km Terms of Use



13 July 2017 10:00 pm PDT





NANOOS

NORTHWEST ASSOCIATION OF NETWORKED OCEAN OBSERVING SYSTEMS



Apps Disclaimer Settings Log In

NVS
BOATERS

v5.4 Contact NANOOS

Powered by Vizer

Map

Help

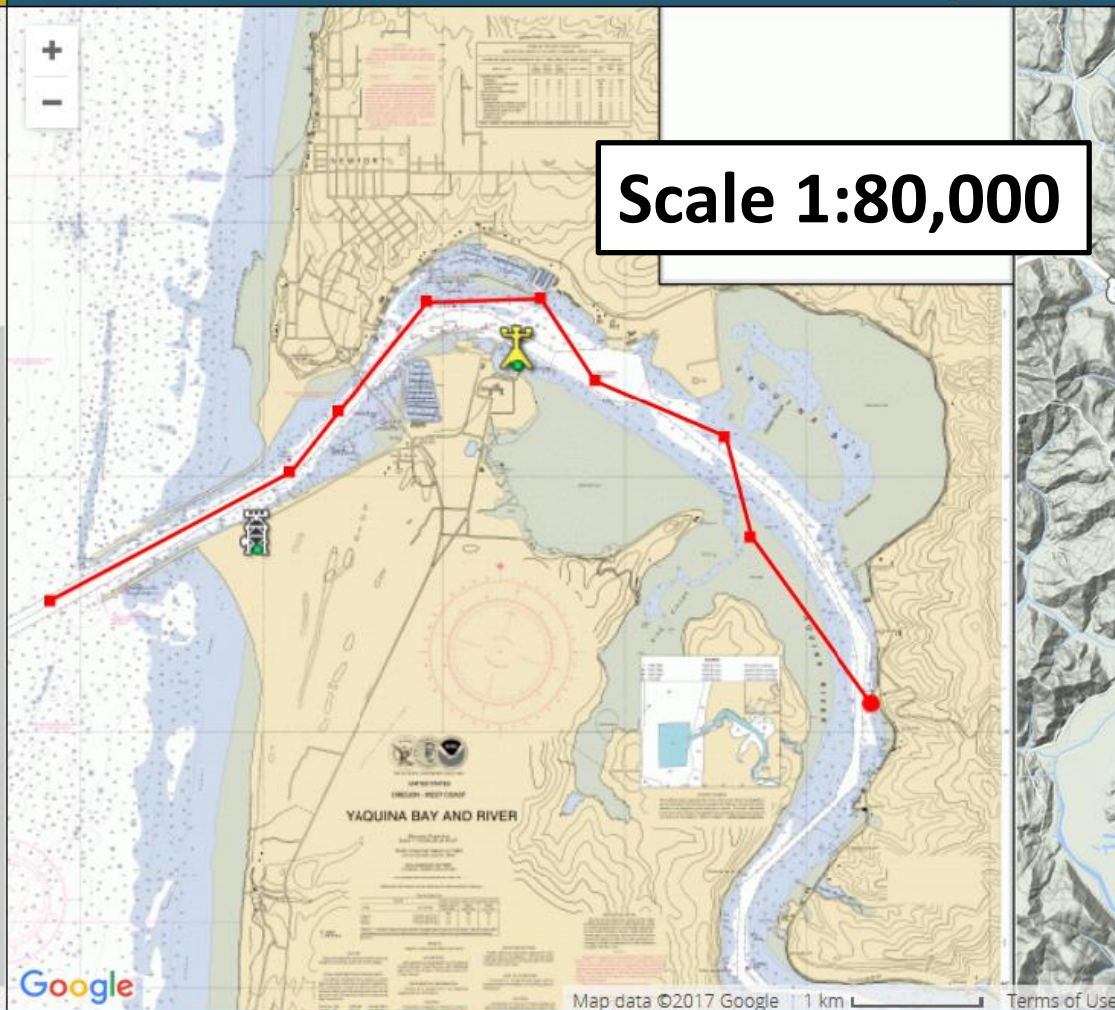
Lat: 44.5876

Lon: -124.0657

Terrain

- Charts
- Regions
- Routes
- Current Conditions
- Fixed Platforms
- Remote Sensing
- Forecasts
- Markers
- Legend

- Charts
- Coquille River (Entrance)
 - Coos Bay
 - Depoe Bay - Alsea Bay
 - Nehalem River
 - Port Orford - Cape Blanco
 - Pyramid Point - Cape Sebastian
 - Siuslaw River
 - Trinidad Head - Cape Blanco
 - Tillamook Bay
 - Umqua River - Entrance
 - Yaquina Bay - Columbia River
 - Yaquina Bay & River
 - California Nautical Charts
 - Other Nautical Charts





NANOOS

NORTHWEST ASSOCIATION OF NETWORKED OCEAN OBSERVING SYSTEMS



88 Apps Disclaimer Settings Log In

NVS
BOATERS

v5.4 Contact NANOOS

Powered by Vizer

Map

Help

Current Conditions

Lat: 44.5860

Lon: -124.0090

Terrain

Auto Hide Platforms

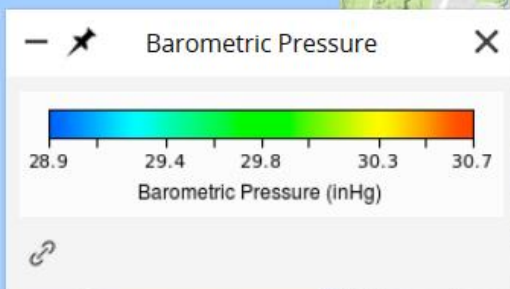
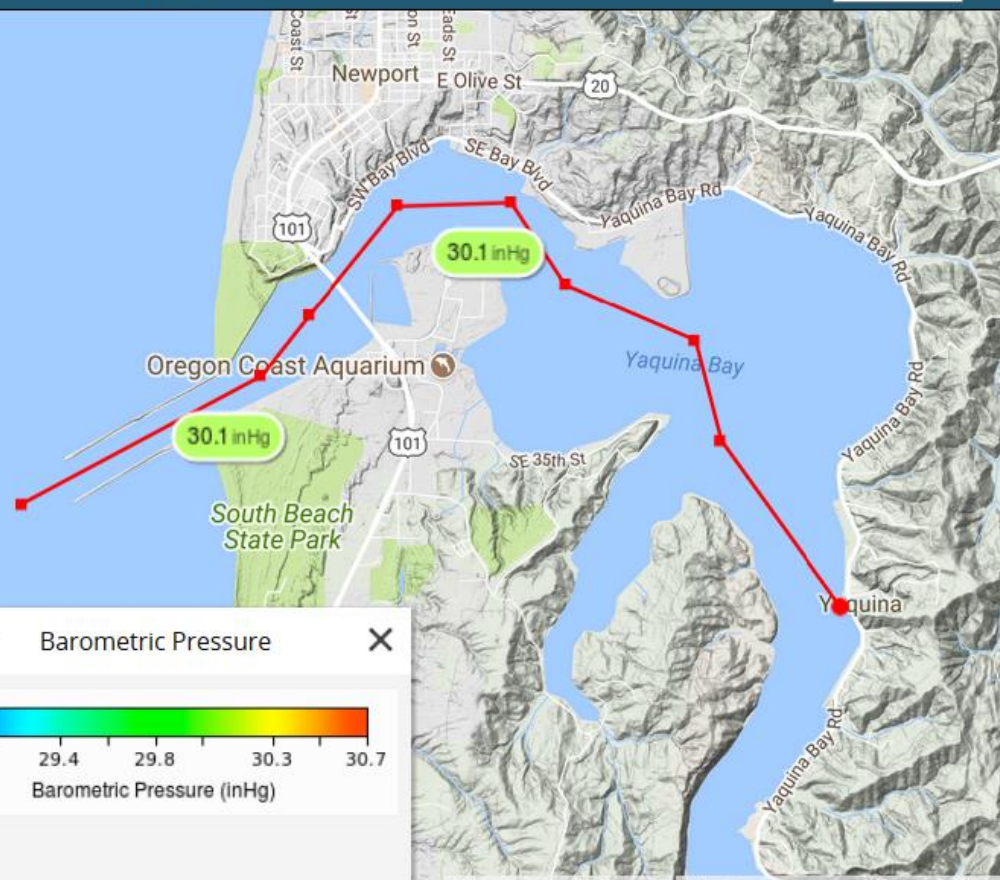
Air Temperature

Barometric Pressure

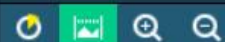
Water Temperature (Surface)

Waves

Winds



Map data ©2017 Google 1 km Terms of Use



10 July 2017 6:00 am PDT

Apr 2017 May 2017 Jun 2017 Jul 2017 Aug 2017 Sep 2017

Barometric Pressure



- Charts
- Regions
- Routes
- Current Conditions
- Fixed Platforms
- Remote Sensing
- Forecasts
- Markers
- Legend



NANOOS

NORTHWEST ASSOCIATION OF NETWORKED OCEAN OBSERVING SYSTEMS



IOOS

Apps Disclaimer Settings Log In

NVS
BOATERS

v5.4 Contact NANOOS

Powered by Vizeer

Map Help

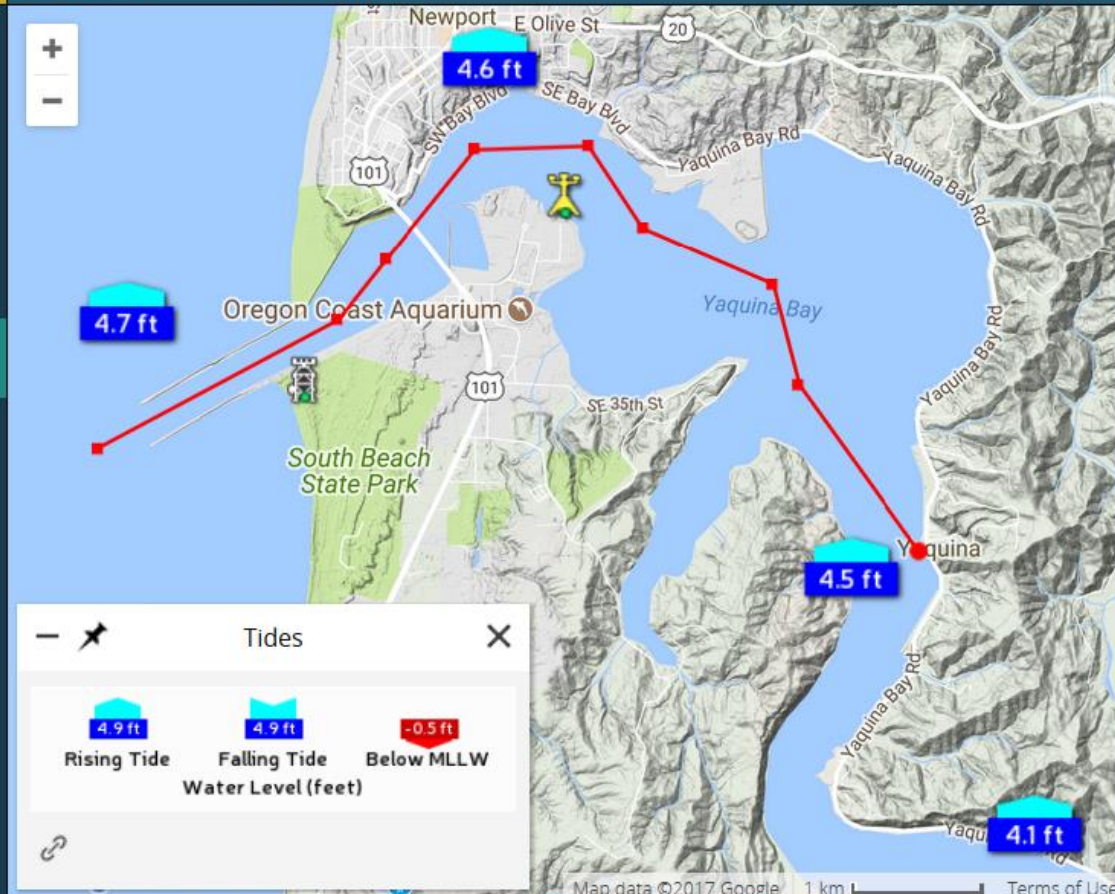
Forecasts X

Lat: 44.5794 Lon: -124.0617

Terrain

- Charts
- Regions
- Routes
- Current Conditions
- Fixed Platforms
- Remote Sensing
- Forecasts
- Markers
- Legend

- Air Temperature
- Barometric Pressure
- Dom. Wave Period
- Surface Currents
- Tides
- Waves - Offshore
- Wind Gust
- Winds



Tides

4.9 ft	4.9 ft	-0.5 ft
Rising Tide	Falling Tide	Below MLLW
Water Level (feet)		





NANOOS

NORTHWEST ASSOCIATION OF NETWORKED OCEAN OBSERVING SYSTEMS



IOOS

Apps Disclaimer Settings Log In

NVS
BOATERS

v5.4 Contact NANOOS

Powered by Vizer

Map Help

Forecasts

Lat: 44.5904 Lon: -124.0006

Terrain

Air Temperature

Barometric Pressure

Dom. Wave Period

Surface Currents

Tides

Waves - Offshore

Wind Gust

Yaquina, Yaquina Bay and River

Region: Oregon

Latitude: 44.6000 Longitude: -124.0167

Tides

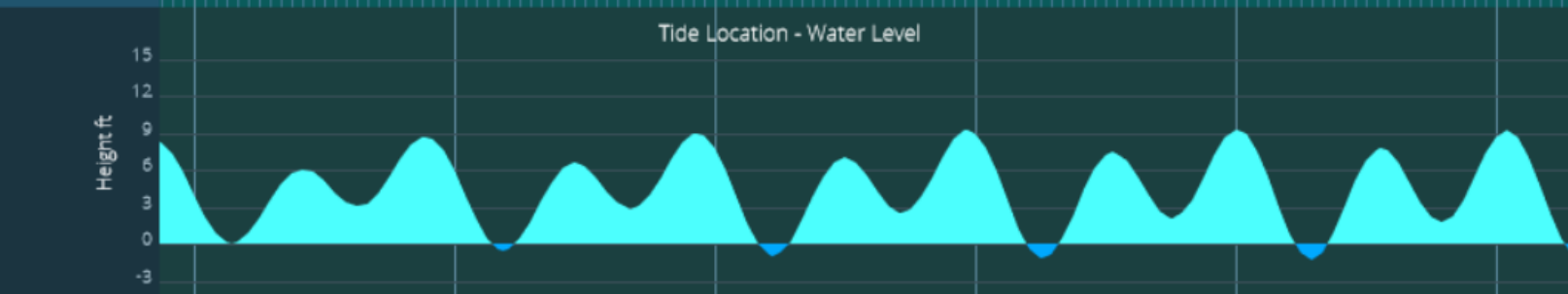
Rising Tide: 4.9 ft

Falling Tide: 4.9 ft

Below MLLW: -0.5 ft

Water Level (feet)

13 July 2017 2:00 pm PDT



- Charts
- Regions
- Routes
- Current Conditions
- Fixed Platforms
- Remote Sensing
- Forecasts
- Markers
- Legend



NANOOS

NORTHWEST ASSOCIATION OF NETWORKED OCEAN OBSERVING SYSTEMS



IOOS

Apps Disclaimer Settings **Log In**

NVS
BOATERS

v5.4 Contact NANOOS

Powered by Vizer

Map Help

Markers X

Lat: 44.6657 Lon: -124.0537

Terrain

Show All Hide All

Marina 822

Embarcadero Resort & Marina X



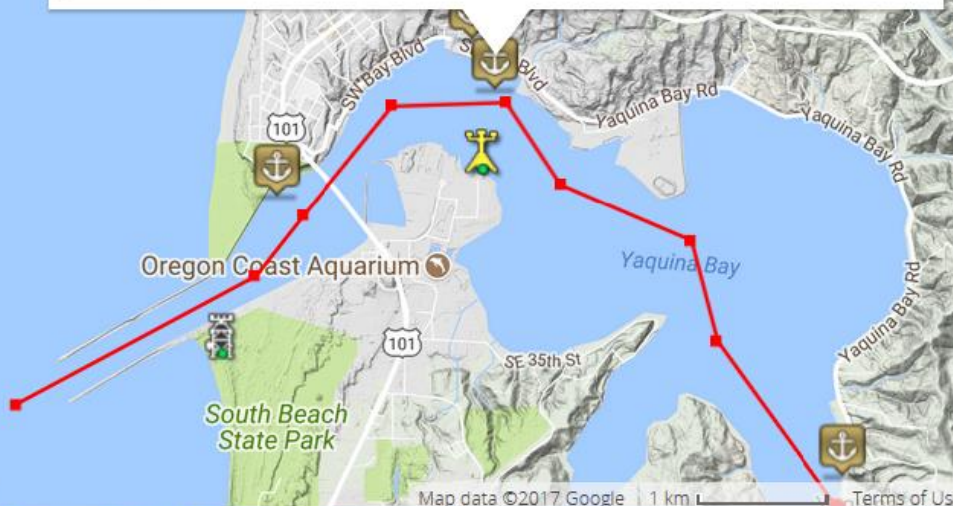
Type: Marina

Latitude: 44.6289 Longitude: -124.

Address: 1000 Se Bay Blvd,
Newport, OR 97365

Phone: 541-265-8521

Link



Google

Map data ©2017 Google 1 km Terms of Use



13 July 2017 9:00 am PDT





NANOOS

NORTHWEST ASSOCIATION OF NETWORKED OCEAN OBSERVING SYSTEMS



IOOS

[Apps](#) [Disclaimer](#) [Settings](#) [Log In](#)

NVS
LOG IN

v5.4 [Contact](#)  NANOOS

Powered by Vizer



Username
or Full Name

Password

Log In

[Create a New Account](#)

[I Forgot my Password](#)



NANOOS

NORTHWEST ASSOCIATION OF NETWORKED OCEAN OBSERVING SYSTEMS



Apps

Disclaimer

Settings

Log In

NVS
BOATERS

v5.4

Contact

NANOOS



Map

Help

Powered by Vizer

Current Conditions



Lat: 40.0245

Lon: -127.9688

Terrain



Auto Hide Platforms



Air Temperature



Barometric Pressure



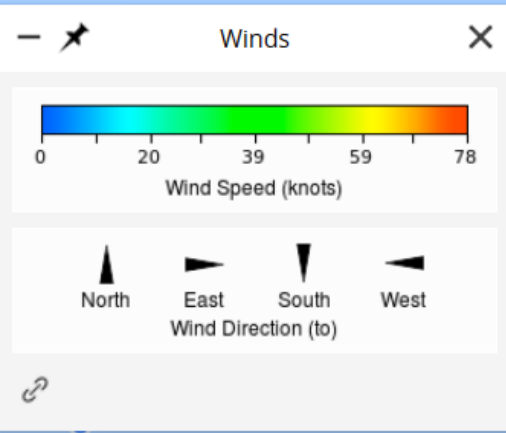
Water Temperature (Surface)



Waves



Winds



Map data ©2017 Google, INEGI 100 km Terms of Use



10 July 2017 8:00 pm PDT



May 2017

Jun 2017

Jul 2017



Winds





NANOOS

NORTHWEST ASSOCIATION OF NETWORKED OCEAN OBSERVING SYSTEMS



Apps Disclaimer Settings Log In

NVS
BOATERS

v5.4 Contact NANOOS

Powered by VIZ



Map

Help

Forecasts



Lat: 40.7670

Lon: -124.2170

Terrain



Charts

Regions

Routes

Current Conditions

Fixed Platforms

Remote Sensing

Forecasts

Markers

Legend

Air Temperature

Barometric Pressure

Dom. Wave Period

Surface Currents

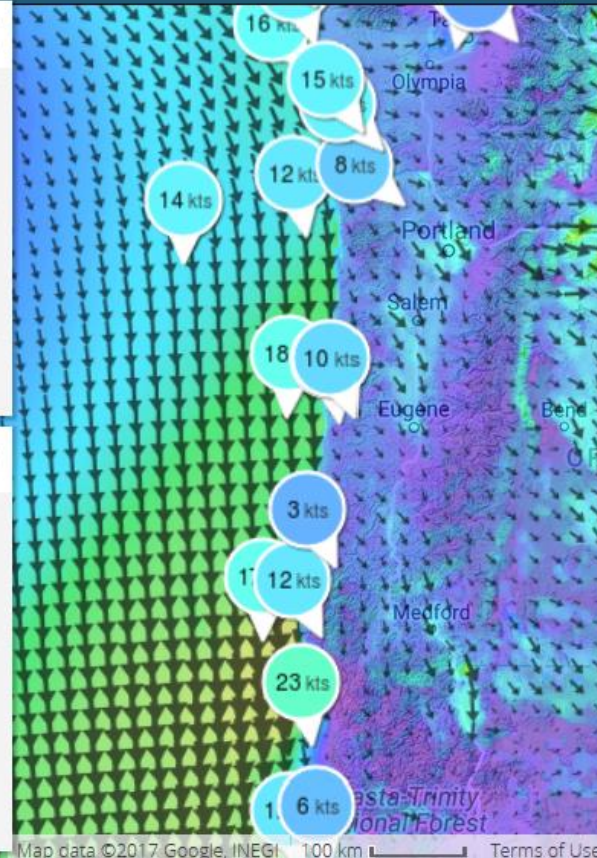
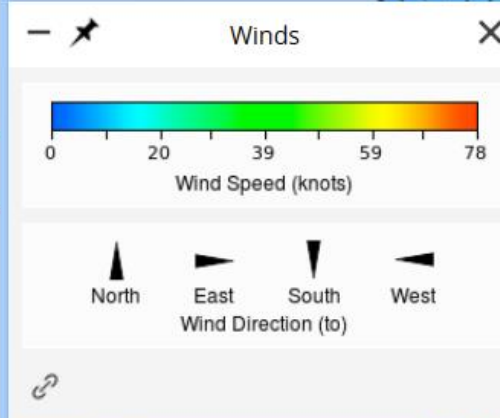
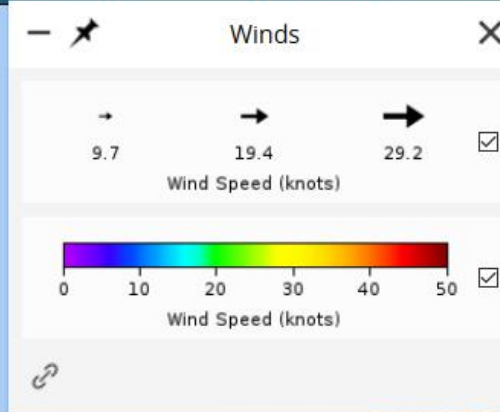
Tides

Waves - Offshore

Wind Gust

Winds

Compare forecasts and current conditions





NANOOS

NORTHWEST ASSOCIATION OF NETWORKED OCEAN OBSERVING SYSTEMS



IOOS

88 Apps

Disclaimer

Settings

Log In

NVS
BOATERS

v5.4

Contact

NANOOS

Powered by Vizeer

Map

Help

Fixed Platforms

Lat: 44.1145

Lon: -125.3540

Terrain

Expand All

Collapse All

Buoy

CDIP Astoria Canyon



CDIP Cape Mendocino



CDIP Clatsop Spit



CDIP Grays Harbor



CDIP Humboldt Bay N



CDIP Umpqua



Google



NDBC 46050 - Stonewall Bank - 20NM W of Newport

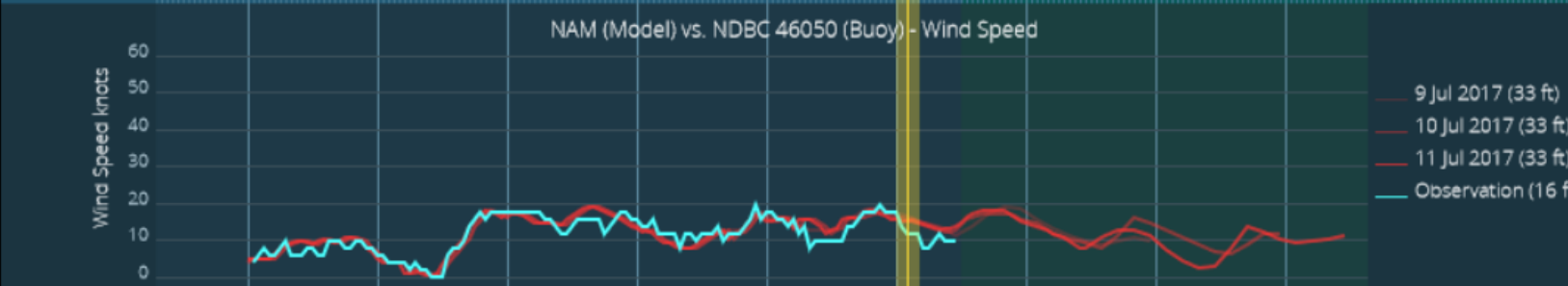
Observations Forecasts **Comparator** Details History

Provider: NOAA-NCEP Data Source: OSU

ATMOSPHERIC

Air Temp.		
Baro. Pressure		
Wind Direction		
Wind Gust		
Wind Speed		

[Link](#)





NANOOS

NORTHWEST ASSOCIATION OF NETWORKED OCEAN OBSERVING SYSTEMS



IOOS

Apps Disclaimer Settings Log In

NVS
BOATERS

v5.4 Contact NANOOS

Powered by Vizer

Map

Help

Remote Sensing



Lat: 41.7042

Lon: -127.1338

Terrain



Expand All

Collapse All

Radar



HF Radar



Currents (6km, 25-Hour Filter)



Currents (6km, Unfiltered)



Currents (2km, 25-Hour Filter)



Currents (2km, Unfiltered)



Currents



0.2

0.6

1.4



Current Magnitude (knots)

0

0.49

0.97

1.46

1.94



Speed (knots)

Map data ©2017 Google 50 km Terms of Use



11

July

2017

8:00 am PDT



Jul 2017

14

25

26

27

28

29

30

1

2

3

4

5

6

7

8

9

10

11

12

13

14

15

16



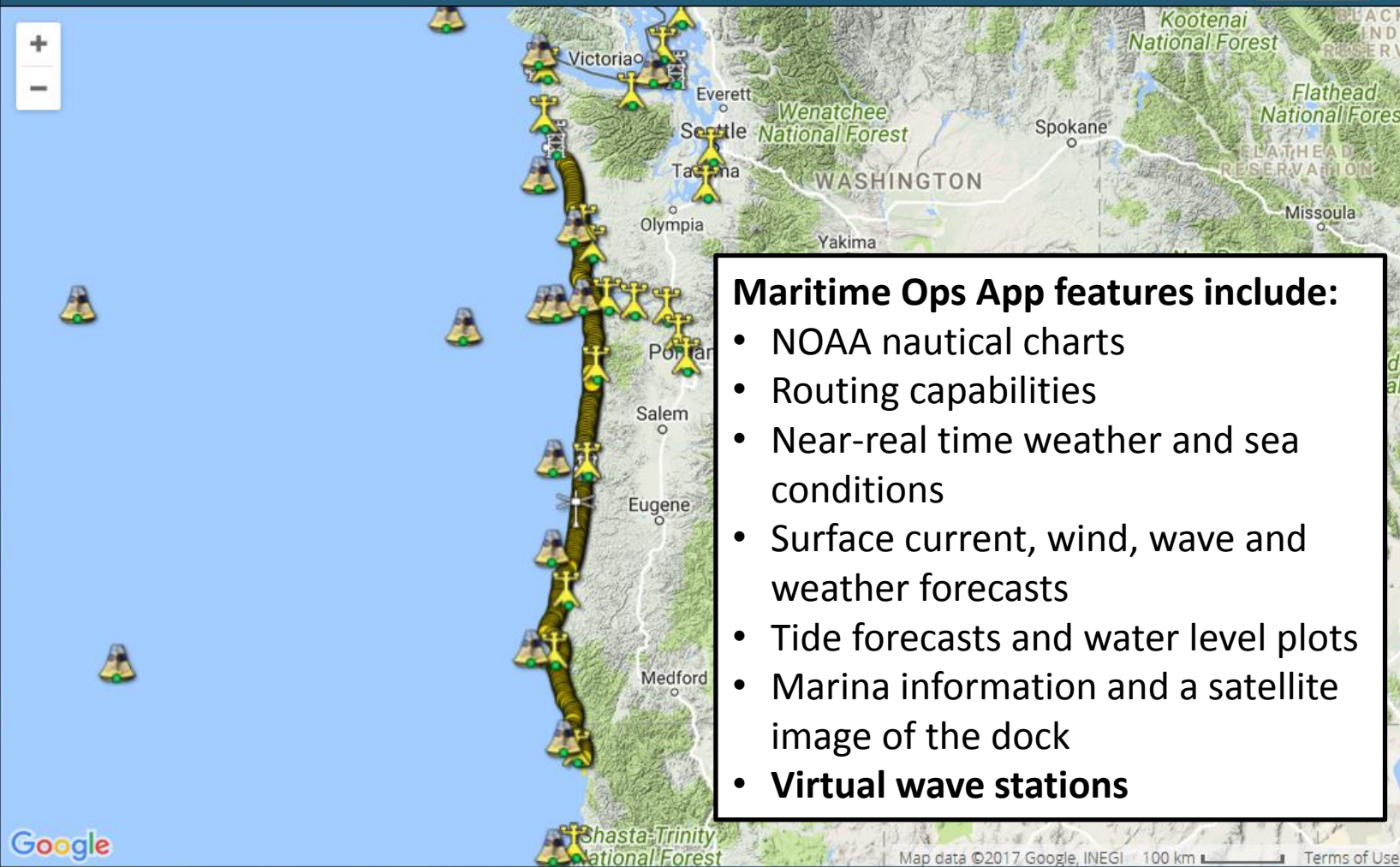
Currents



Lat: 40.9437 Lon: -127.7930

Terrain

- Charts
- Map Layers
- Regions
- Routes
- Current Conditions
- Fixed Platforms
- Remote Sensing
- Models
- Virtual Stations
- Legend



Maritime Ops App features include:

- NOAA nautical charts
- Routing capabilities
- Near-real time weather and sea conditions
- Surface current, wind, wave and weather forecasts
- Tide forecasts and water level plots
- Marina information and a satellite image of the dock
- **Virtual wave stations**



NANOOS

NORTHWEST ASSOCIATION OF NETWORKED OCEAN OBSERVING SYSTEMS



IOOS

Apps

Disclaimer

Settings

Log In

NVS

MARITIME OPERATIONS

v5.4

Contact

NANOOS



Map

Overview

Help

Powered by Vizer

Virtual Stations



Lat: 44.5760

Lon: -124.1232

Terrain



Show All

Hide All

Expand All

Collapse All

Wave Forecasts



Wave Forecasts - 25 meters - Location 111



Plots

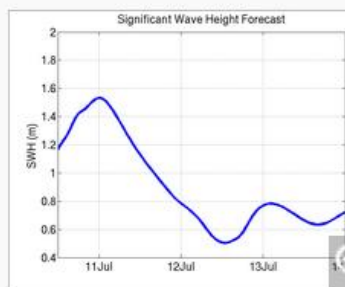
Details

Forecast

Alongshore

Spectra

Polar



Wave Height (SI)

Wave Height (US)

Wave Direction

Wave Period

Spectral Width

Wave Power

Link

Google

Map data ©2017 Google

2 km

Terms of Use



13

July

2017

9:00 am PDT





NANOOS

NORTHWEST ASSOCIATION OF NETWORKED OCEAN OBSERVING SYSTEMS



Apps Disclaimer Settings Log In

NVS
MARITIME OPERATIONS

v5.4 Contact NANOOS

Powered by Vizer

Map Overview Help

Virtual Stations X

Lat: 44.5887 Lon: -124.1829

Terrain

Show All Hide All

Expand All Collapse All

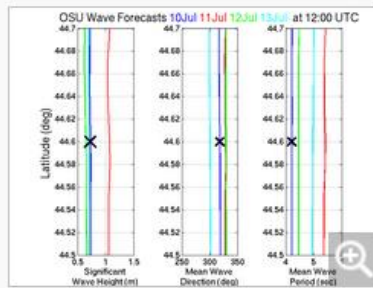
Wave Forecasts +



Wave Forecasts - 25 meters - Location 111 X

Plots Details

Forecast Alongshore Spectra Polar



Alongshore Conditions

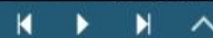
Link



Map data ©2017 Google 2 km Terms of Use

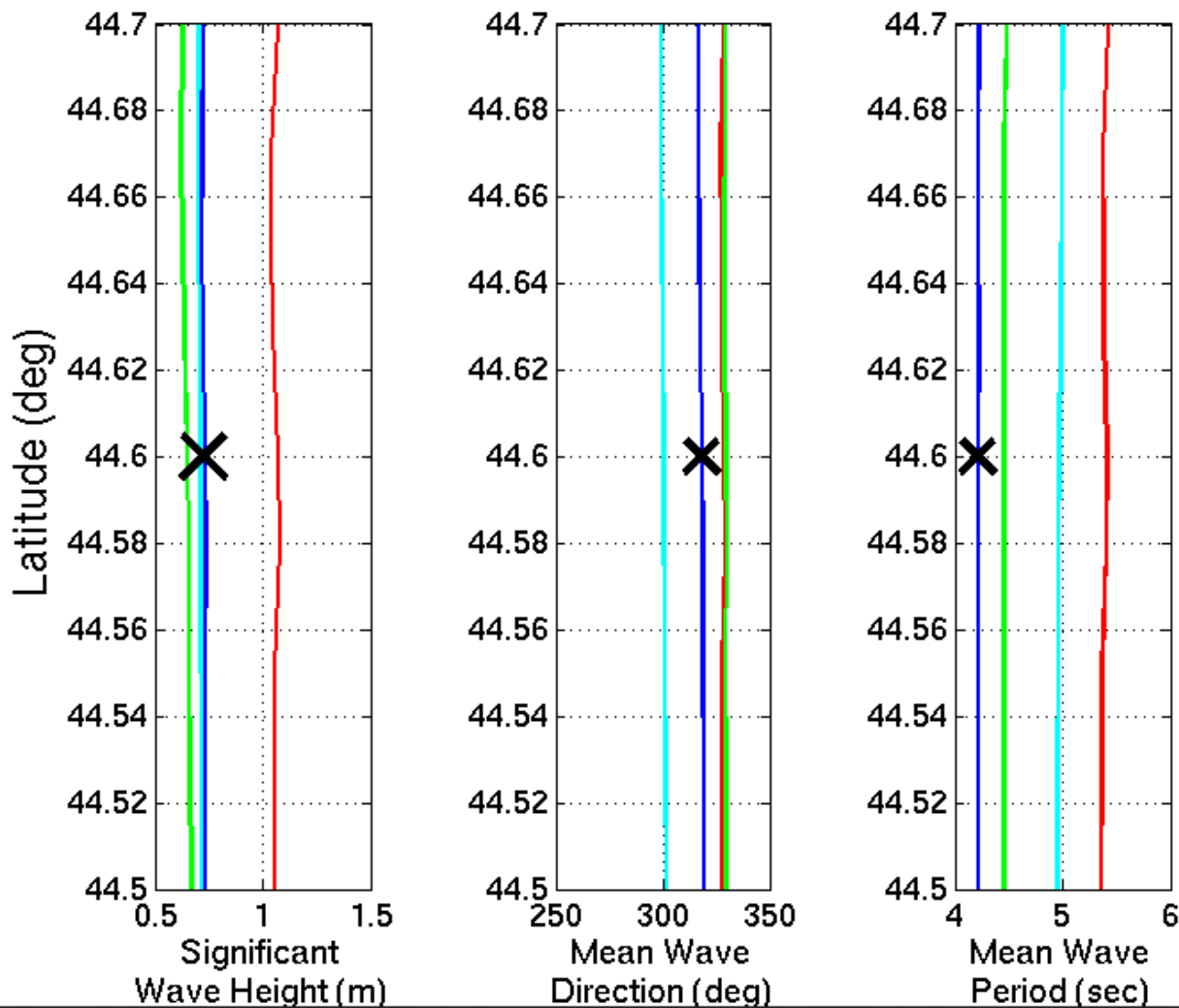


13 July 2017 9:00 am PDT





OSU Wave Forecasts 10Jul 11Jul 12Jul 13Jul at 12:00 UTC





Discussion Questions:

- *Is the app giving you the information you need?*
- *Can you find the information you're looking for? If so, is it presented in a way that is useful?*
- *Are you using NVS while out on the water or before going out?*
- *Do you use the "Current Conditions" feature? If so, for what purpose(s)?*
- *Do you use the "Routes" feature? If so, how?*
- *Other....*