



NANOOS

NORTHWEST ASSOCIATION OF NETWORKED OCEAN OBSERVING SYSTEMS



Tsunami Evacuation Zones

Jonathan Allan
Jonathan.allan@oregon.gov

NANOOS Workshop, OCCO July 13, 2017



NANOOS

NORTHWEST ASSOCIATION OF NETWORKED OCEAN OBSERVING SYSTEMS



IOOS

88 Apps

Disclaimer

Settings

Log In

NVS

v5.4

Contact

NANOOS

Powered by Vizer



Data Explorer



Tsunami Evacuation Zones



Boaters



Tuna Fishers



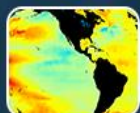
Shellfish Growers



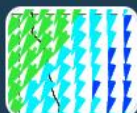
Beach and Shoreline Changes



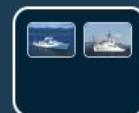
Maritime Operations



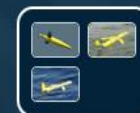
Climatology



High Frequency Radar



Cruises



Gliders



Help

ADDITIONS & UPDATES

[View Last 3 Months](#)



HMSC Newport

Station is offline since 6/22 due to sensor malfunction. It will likely be a few months before station is back online.

Updated on 6 Jul 2017



OSU CB-06

New NANOOS shelf mooring deployed 6/10, 6 nm off Coos Bay / Cape Arago as relocation of now-decommissioned NH-10 mooring. Measures (in near-real-time) weather, temp. & salt (1.5 m), and currents. PMEL air & water CO2 and 1-m temp. & salt also deployed.

Added on 5 Jul 2017



OSU NH-10

The NH-10 mooring has been relocated to a new location offshore of Coos Bay, designated as CB-06. See the OOI CE02SHSM mooring for continued data near the NH-10 station location.

Updated on 5 Jul 2017



CMOP Saturn02

Mooring was redeployed in early June. NVS harvesting is now restored, with an updated weather and water sensor configuration for this multi-depth asset.

Updated on 23 Jun 2017



Taylor-PCSGA Dabob

Sensors are back online starting on June 14, after a gap due to instrument problems and maintenance.

Updated on 21 Jun 2017



NDBC Washington

Buoy deployed and data released on 5/31/2017; but continuous data transmission started on Jun. 5. Buoy location was updated (previous deployment position was 42.612 N, 130.537 W)

Updated on 7 Jun 2017





NANOOS

NORTHWEST ASSOCIATION OF NETWORKED OCEAN OBSERVING SYSTEMS



88 Apps Disclaimer Settings Log In

NVS TSUNAMI EVACUATION ZONES

v5.4 Contact NANOOS

Powered by Vize

- Map Layers
- Regions
- Places
- Markers
- Information
- Legend

Map

Places

Enter Address

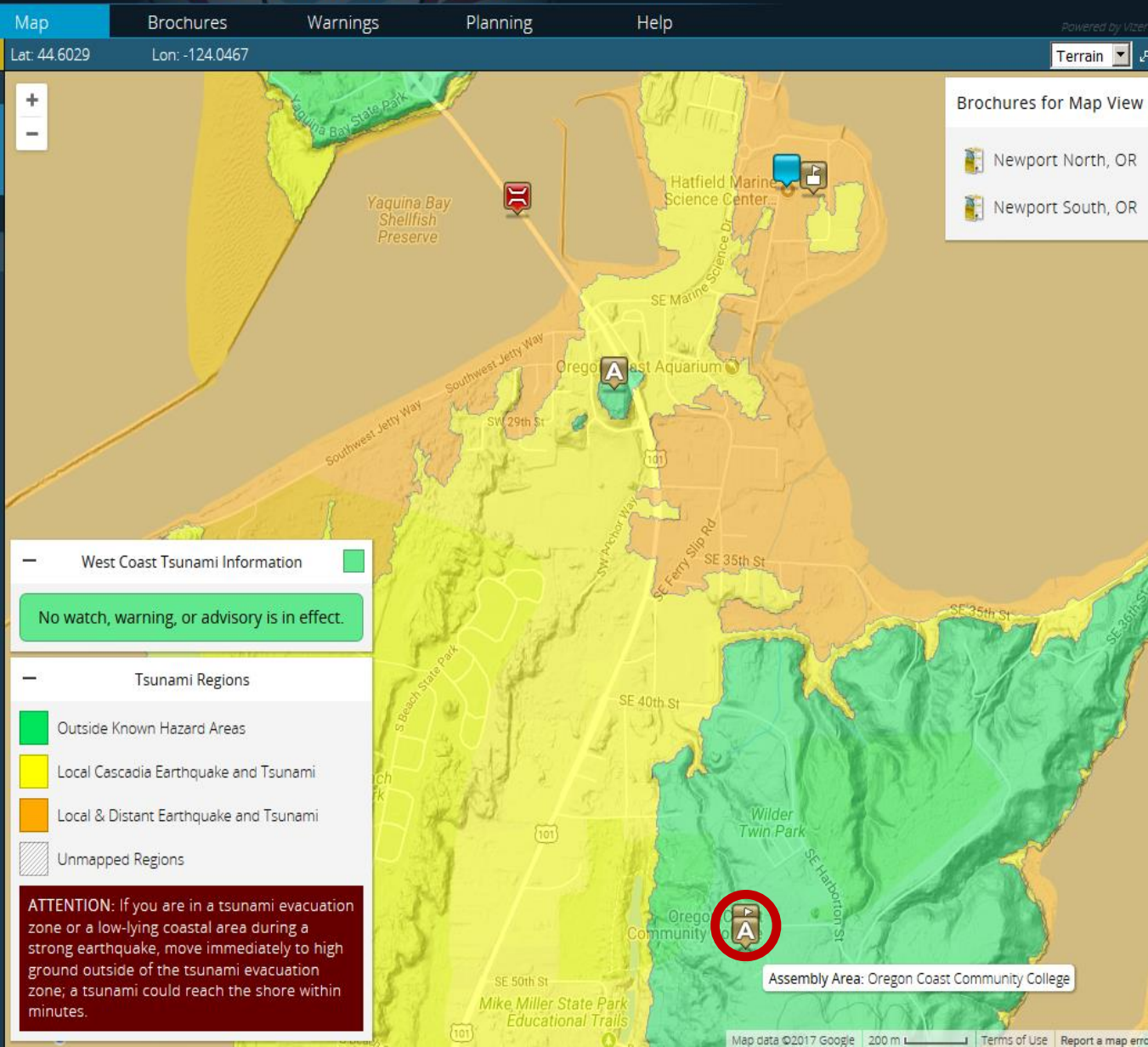
Click on Map

Get Location

Your Places

Edit Places Off

HMSC, Newport



Brochures for Map View

- Newport North, OR
- Newport South, OR

West Coast Tsunami Information

No watch, warning, or advisory is in effect.

Tsunami Regions

- Outside Known Hazard Areas
- Local Cascadia Earthquake and Tsunami
- Local & Distant Earthquake and Tsunami
- Unmapped Regions

ATTENTION: If you are in a tsunami evacuation zone or a low-lying coastal area during a strong earthquake, move immediately to high ground outside of the tsunami evacuation zone; a tsunami could reach the shore within minutes.

Assembly Area: Oregon Coast Community College



NANOOS

NORTHWEST ASSOCIATION OF NETWORKED OCEAN OBSERVING SYSTEMS



IOOS

88 Apps Disclaimer Settings Log In

NVS TSUNAMI EVACUATION ZONES

v.5.4 Contact NANOOS

Powered by Vizer

- Map Layers
- Regions
- Places
- Markers
- Information
- Legend

Map

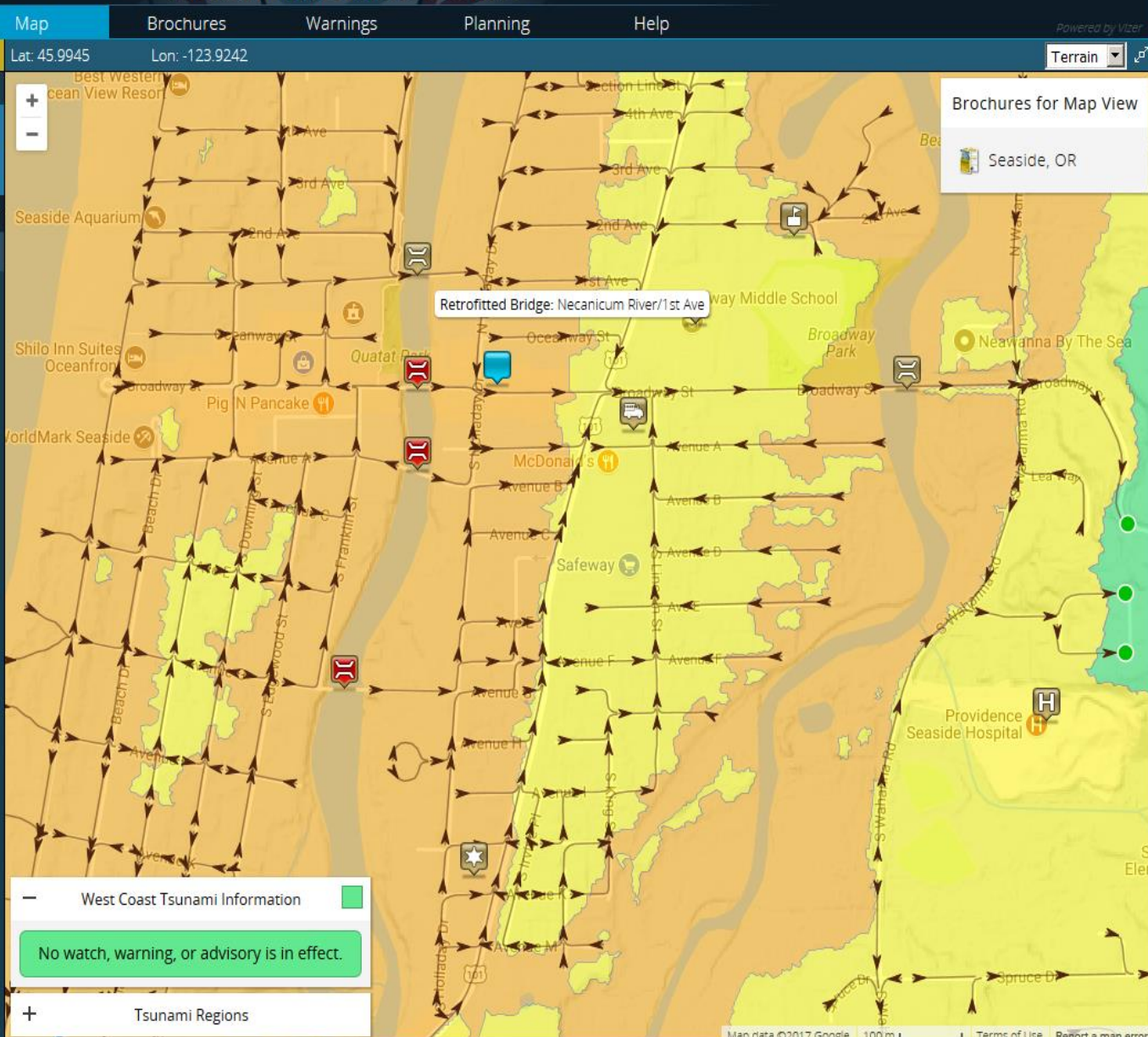
Brochures Warnings Planning Help

Places Lat: 45.9945 Lon: -123.9242

Enter Address Click on Map

Your Places

- Edit Places Off
- HMSC, Newport
- Seaside, Oregon



Brochures for Map View

- Seaside, OR